

2015 ISAF Sailing World Cup

ISAF SWC Hyères Round SAILING INSTRUCTIONS (RSI) Addendum

RSI 1 RULES

- RSI 1.1 The current version of the Addendum Q, Umpire Fleet Racing, can be found at http://www.sailing.org/raceofficials/internationaljudge/document_library.php

RSI 2 ADVERTISING and BOW NUMBERS [DP] [NP]

- RSI 2.1 Boats are required to display the following advertising that will be provided by the OA and shall be fixed in accordance with the instructions posted on the Official Notice Board:
- (a) Blue TPM Sticker

RSI 5 SCHEDULE OF RACES

- RSI 5.1 The schedule of races for each event is shown in RSI Addendum 1. The schedule will be updated and published on the Official Notice Boards in accordance with NoR/SI 10.1.
- RSI 5.2 Races not sailed on the scheduled day may be sailed on a following day at the discretion of the race committee.
- RSI 5.3 The warning signal for each succeeding race will be made as soon as practicable.

RSI 7 SAFETY REGULATIONS [DP] [NP]

- RSI 7.1 Emergency Communications

Radio Channel	71
Emergency Services	112
Organizing Authority	04 94 01 48 90

RSI 9 COMMUNICATIONS WITH COMPETITORS

- RSI 9.1 Notices to competitors will be posted on the official notice board located near the Race Office and on the <http://www.sailing.org/worldcup/onb.php>. Notices may also be posted at other locations. Failure to post a notice at these other locations will not be grounds for redress. This changes RRS 62.
- RSI 9.2 Signals ashore will be displayed on the flagpole located on the roof of the Yacht Club building.
- RSI 9.3 There will be a daily morning meeting with team leaders at 8:15 in Espace Nautique Hyerois, 1st floor.
- RSI 9.4 When flag AP is displayed ashore, '1 minute' is replaced with 'not less than 45 minutes' (30 minutes for RSX Men, RSX Women, 49er and 49erFX) in the race signal AP.

RSI 13 COURSE AREAS AND MARKS

- RSI 13.1 Course Areas are shown in Addendum RSI 1.

RSI 13.2 Course Area Assignments are shown in RSI Addendum 3. Daily updates may be posted on the Official Notice Boards in accordance with NoR/SI 10.2.

RSI 13.3 Marks 1, 2, 3, and 4, or associated gate marks, will be as follows:

Course Area	Marks 1, 2, 3, 4	New Mark
Alpha	White cylinder	Orange Cylinder
Bravo	Orange cylinder	Black cylinder
Charlie	Green cylinder	White cylinder
Delta	Black cylinder	Yellow cylinder
Echo	Yellow cylinder	Orange cylinder

RSI 13.4 Offset marks will be the same (colour and shape) as Marks 1.

RSI 13.5 Marks S1, S2, and S3, or associated gates, will be Orange cylinder.

RSI 13.6 The starting and finishing line marks will be race committee vessels or inflatable marks.

RSI 13.7 Inflatable starting line marks, when used, will be Green cylinder.
Inflatable finishing line marks, when used, will be White cylinder.

RSI 19 PROTESTS, PENALTIES and REQUESTS for REDRESS

RSI 19.1 For each fleet, the protest time limit is 90 minutes after the last boat has finished the last race of the day.

RSI 28 OFFICIAL BOATS

Official boats will be marked as follows:

Equipment Inspection – white flag with letter “M”

Jury/Judges – yellow flag with letter “JURY”

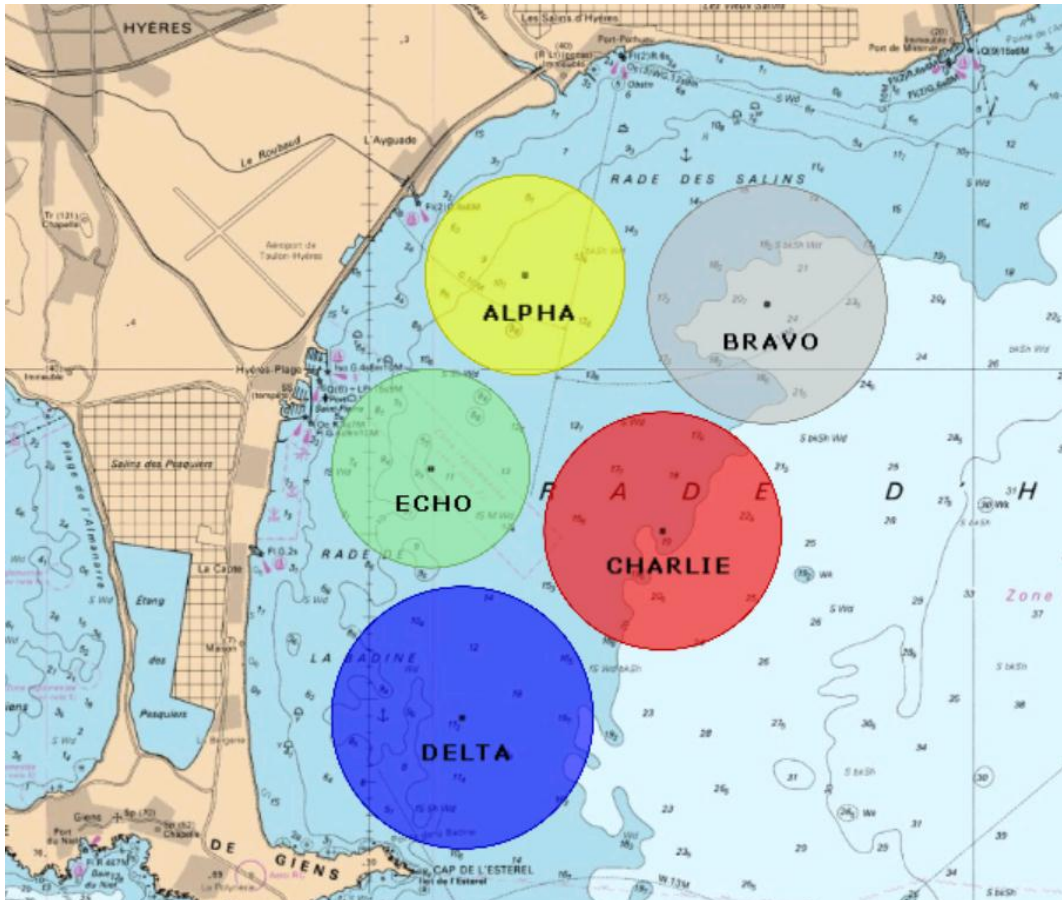
Media – white flag with letter “PRESS”

Organisers/VIP – white flag with letter “VIP”

Race Committee – white flag with letter of the racing area

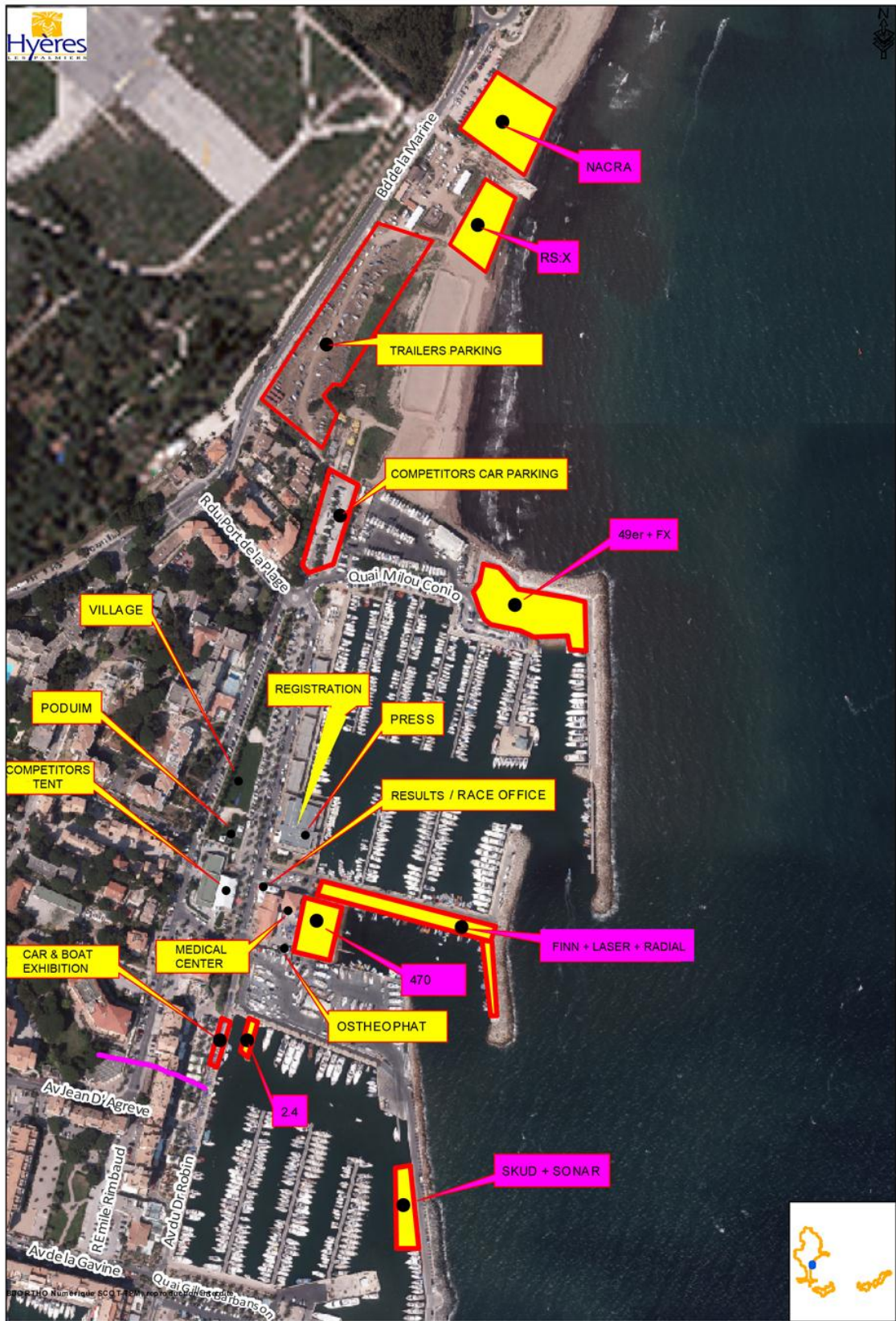
Rescue or Course Marshals – coloured pennants: A-yellow, B-black, C-red, D-blue, E-green

RSI ADDENDUM 1 CHART OF COURSE AREAS



Area	Area Centre	Area Diameter	VHF Channel
Alpha	43°05,550' N 006°11,290' E	1.20 nm	67
Bravo	43°05,380' N 006°13,290' E	1.40 nm	08
Charlie	43°04,000' N 006°12,430' E	1.40 nm	72
Delta	43°02,860' N 006°10,770' E	1.50 nm	06
Echo	43°04,380' N 006°10,520' E	1.20 nm	77

RSI ADDENDUM 2 VENUE MAP



Utilisateur : jodriguez

29/01/2015

RSI ADDENDUM 3 SCHEDULE OF RACES

	Area	Wed		Thu		Fri		Sat		Sun	
		Time	#	Time	#	Time	#	Time	#	Time	#
Paralympic One Person Keelboat	TBA	1315	2	1315	2	1315	2	1315	2		
Paralympic Three Person Keelboat	TBA	1300	2	1300	2	1300	2	1300	2		
Men's Windsurfer	A	1100	3	1115	3	1100	3	1115	3	TBA	1
Women's Windsurfer	A	1115	3	1100	3	1115	3	1100	3	TBA	1
Men's One Person Dinghy	C	1100	2	1115	2	1100	2	1115	2	TBA	1
Women's One Person Dinghy	C	1115	2	1100	2	1115	2	1100	2	TBA	1
Heavyweight Men's One Person Dinghy	D	1100	2	1300	2	1100	2	1300	2	TBA	1
Men's Skiff	E	1100	3	1300	3	1100	3	1300	3	TBA	1
Women's Skiff	E	1300	3	1100	3	1300	3	1100	3	TBA	1
Men's Two Person Dinghy	B	1100	2	1115	2	1100	2	1115	2	TBA	1
Women's Two Person Dinghy	B	1115	2	1100	2	1115	2	1100	2	TBA	1
Mixed Two Person Multihull	D	1300	3	1100	3	1300	3	1100	3	TBA	1