

# NOTICE OF RACE

The Delta Lloyd Regatta 2015 will be held in Medemblik, the Netherlands from Sunday May 24 to Saturday May 30 2015

The Organizing Authority is the Royal Netherlands Watersport Association, the Royal Yacht Club Hollandia and Trefpunt-PRISM

*This is a qualifier event for the ISAF SWC Weymouth & Portland and a 2015 EUROSAF Champions Sailing Cup Regatta.*

*Formula Kite class will be separated to this NoR invited*

## 1. RULES

- 1.1 The regatta will be governed by the rules as defined in *The Racing Rules of Sailing* (RRS).
- 1.2 RRS Appendix P, *Special Procedures for Rule 42*, will apply.
- 1.3 For Medal races, ISAF Addendum Q, *Umpired Fleet Racing*, available on the ISAF website ([www.sailing.org](http://www.sailing.org)), will apply and changes a number of racing rules. The version that is current when the regatta begins will appear in full in the Sailing Instructions.
- 1.4 For Paralympic events,
  - 1.4.1 For the 2.4mR event, the 2.4 Norlin OD class rules will apply. However, Schedule K of the 2010 International 2.4 class rules will apply to boats that previously held measurement certification under Schedule K but do not hold certification under 2.4 Norlin OD class rules.
  - 1.4.2 SKUD 18 Class Rules Section J.3 will apply.
  - 1.4.3 This will be a Sonar Class Association Appendix B - Alternative Rules event.
- 1.5 The Royal Netherlands Watersport Association Prescriptions will not apply.
- 1.6 If there is a conflict between languages the English text will take precedence.

## 2. ADVERTISING AND BOW NUMBERS

- 2.1 Boats may be required to display bow numbers and advertising chosen and supplied by the Organising Authority.
- 2.2 Competitors ranked first, second and third in the series at the beginning of each day, may be required to wear yellow, blue and red bibs respectively while racing. The bibs will be provided by the Organising Authority.
- 2.3 [SP] Boats shall display national flags on mainsails as specified in their class rules. If the class rules do not include a specification for display flags on mainsails, they shall be displayed in accordance with ISAF specifications available on the ISAF website.

## 3. ELIGIBILITY AND ENTRY

- 3.1 The regatta is open to boats competing in events chosen for the 2016 Olympic Sailing Competition and the 2016 Paralympic Sailing Competition.
- 3.2 Olympic gender requirements will apply for each Olympic event. Women are not eligible to compete in men's events and vice versa.

# Delta Lloyd Regatta 2015

for

## Olympic and Paralympic Classes



- 3.3 For the Paralympic events, these events will be open to all competitors whether or not they meet they meet Paralympic Eligibility criteria.
- 3.4 Competitors and coaches shall enter by completing the on-line entry form on the event website [www.deltalloydregatta.org](http://www.deltalloydregatta.org) and paying the required fees. On-line entry opens on Monday November 3 2014. **Entries including payment must be received no later than Monday May 4 2015 to qualify for the early entry fee and will not be accepted after 1800 Monday May 25 2015.** Entry in the event is not final until payment and registration are completed.
- 3.5 ISAF Eligibility shall apply. Each athlete shall be registered as an ISAF Sailor on the ISAF website: [www.sailing.org/isafsailor](http://www.sailing.org/isafsailor).
- 3.6 Competitors under 18 years of age shall present a signed and completed parent (or guardian) consent and declaration form at registration. The forms are available for download on the event website: [www.deltalloydregatta.org](http://www.deltalloydregatta.org).
- 3.7 The Organising Authority may cancel an event if the minimum number of entries have not been received by midnight (local time), Monday May 4 2015. Competitors will be notified of cancelled events by email and posting on the event website. The entry fees for cancelled events will be refunded.

Event	Class	Minimum Entries
Men's One Person Dinghy	Laser	15
Women's One Person Dinghy	Laser Radial	15
Men's One Person Dinghy Heavy	Finn	15
Men's Two Person Dinghy	470	15
Women's Two Person Dinghy	470	10
Men's Skiff	49er	15
Women's Skiff	49erFX	10
Men's Windsurfer	RS:X	15
Women's Windsurfer	RS:X	10
Mixed Two Person Multihull	Nacra 17	10
Paralympic One Person Keelboat	2.4mR	10
Paralympic Two Person Keelboat	SKUD18	5
Paralympic Three Person Keelboat	Sonar	5

#### 4. IFDS FUNCTIONAL CLASSIFICATION

- 4.1 Disabled sailors shall have valid International Classification under the current IFDS Functional Classification System.
- 4.2 Protests regarding classification may be filed not later than "first appearance." However, protests will not be decided at the regatta.

# Delta Lloyd Regatta 2015

for

## Olympic and Paralympic Classes

### 5. FEES

- 5.1 Fees are stated in EURO and include any local taxes. Entries received by midnight (local time) Monday May 4 2015 will qualify for the early Entry fee.

Class	Entry Fee	Early Entry Fee
Single Handed Classes	€ 270	€ 170
Double Handed Classes	€ 380	€ 280
Sonar	€ 400	€ 300
Support Boat	€ 80	€ 60

- 5.2 If an entry is cancelled by the competitor, the competitor is obliged to pay as follows:

Cancellation Date	Percentage of Entry Fee to be paid
On or before Friday May 1 2015	0%
On or before Tuesday May 12 2015	50%
After Tuesday May 12 2015	100%

### 6. FORMAT

- 6.1 For Olympic events:
- 6.1.1 The regatta will consist of an Opening Series and a Medal Stage. The Opening Series may be divided into a Qualifying Series and a Final Series.
  - 6.1.2 The top TEN finishers in the Opening Series of each event will advance to the Medal Stage provided a minimum of 3 races have been completed in the Opening Series.
  - 6.1.3 There will be ONE Race in the Medal Stage in ALL events.
- 6.2 For Paralympic events, the regatta will consist of a single series.
- 6.3 Other formats may be used as authorised by the Champions Sailing Cup Steering Committee.

### 7. SCHEDULE

- 7.1 Registration for competitors, coaches and team leaders is scheduled for:
- Sunday May 24 1100-1800
  - Monday May 25 1000-1800
- 7.2 The first briefing for coaches and team leaders is scheduled for 1900 on Monday May 25 at the Regatta Center Medemblik.
- 7.3 The opening ceremony is scheduled to begin 1700 on Monday May 25 at the Regatta Center Medemblik.
- 7.4 The warning for the first race is scheduled to be no earlier than 1000 on Tuesday May 26

# Delta Lloyd Regatta 2015

for

## Olympic and Paralympic Classes

7.5 The schedule of races including Medal stage, if any, and dates of racing is as follows:

Event	Racing Dates	Number of Races
Men's One Person Dinghy	Tuesday May 26 - Saturday May 30	9
Women's One Person Dinghy	Tuesday May 26 - Saturday May 30	9
Men's One Person Dinghy Heavy	Tuesday May 26 - Saturday May 30	9
Men's Two Person Dinghy	Tuesday May 26 - Saturday May 30	9
Women's Two Person Dinghy	Tuesday May 26 - Saturday May 30	9
Men's Skiff	Tuesday May 26 - Saturday May 30	13
Women's Skiff	Tuesday May 26 - Saturday May 30	13
Men's Windsurfer	Tuesday May 26 - Saturday May 30	13
Women's Windsurfer	Tuesday May 26 - Saturday May 30	13
Mixed Two Person Multihull	Tuesday May 26 - Saturday May 30	13
Paralympic One Person Keelboat	Tuesday May 26 - Saturday May 30	10
Paralympic Two Person Keelboat	Tuesday May 26 - Saturday May 30	10
Paralympic Three Person Keelboat	Tuesday May 26 - Saturday May 30	10

7.6 On the last day of racing, no warning signal will be made after 1630.

7.7 The prize giving and closing ceremony is scheduled to begin 1700 on Saturday May 30 2015.

### 8. EQUIPMENT INSPECTION

8.1 Each boat shall have a valid measurement certificate (if required by class rules). Boats shall use the approved Nationality Code Letters on their sails as required by the RRS.

8.2 Boats may be subject to inspection at any time during the event. The procedures for inspections will be specified in the sailing instructions or equipment inspection regulations (EIR).

8.3 The equipment limitations as specified in the class rules shall apply.

### 9. SAILING INSTRUCTIONS

Sailing instructions will be available Sunday May 24 at registration and on the event website. Other documents governing the event will be published with the sailing instructions.

### 10. VENUE

10.1 The regatta will be at Regatta Centrum Medemblik, the Netherlands. Addendum B shows the location of the regatta harbour.

10.2 Addendum C shows the approximate location of the racing areas.

### 11. THE COURSES

The courses will be Windward/Leeward or Trapezoid except that any other courses adopted by ISAF for the 2016 Olympic Sailing Competition or approved by the Champions Sailing Cup Steering Committee may also be used.

# Delta Lloyd Regatta 2015

for

## Olympic and Paralympic Classes

### 12. PENALTY SYSTEM

For the Men's Skiff, Women's Skiff, Mixed Two Person Multihull and Paralympic Two Person Keelboat events, RRS 44.1 and RRS P2.1 are changed so that the Two-Turns Penalty is replaced by the One-Turn Penalty.

### 13. INTERNATIONAL JURY

An International Jury will be appointed in accordance with RRS 91(b).

### 14. SCORING

- 14.1 The Low Point System of RRS Appendix A will apply except that RRS A4.1 is changed so that the points scored in the medal stage are double.
- 14.2 A boat's score shall be calculated in accordance with RRS A2, except that the score for the medal race shall not be excluded.
- 14.3 For the Opening Series, or for the Paralympic classes with a single series, a total of at least 3 races are required to be completed to constitute a regatta. When 5 or more races have been completed, a boat's series score will be the total of her race scores excluding her worst score.
- 14.4 The top TEN boats overall after the Opening Series in the Olympic classes will carry forward their overall points to the Medal Stage which shall be added to their Medal Race points to give the overall Event score.
- 14.5 Ties in the overall Event scores will be decided on the final race scores in the Medal Stage. This changes RRS Appendix A8.

### 15. SUPPORT BOATS AND PERSONNEL

- 15.1 All support boats shall be registered with the Organising Authority and will be required to comply with local legislation and event support boat regulations. The Organising Authority may refuse registrations and accept later registrations at their sole discretion.
- 15.2 All support boats shall clearly display the 3 letter national code of their ISAF Member National Authority at all times while afloat. The minimum height for the letters shall be 200 mm and visible from both sides of the boat.
- 15.3 Support boats with team leaders, coaches and other support personnel shall stay outside areas where boats are racing from the time of the starting sequence until all boats have finished or the race committee signals a postponement, general recall or abandonment.

### 16. BERTHING

Boats shall be kept in their assigned places in the boat park or harbour.

### 17. HAUL-OUT RESTRICTIONS

Boats assigned places in the harbour shall not be hauled out during the regatta, except with and according to the terms of prior written permission of the race committee.

### 18. DIVING EQUIPMENT AND PLASTIC POOLS

Underwater breathing apparatus and plastic pools or their equivalent shall not be used around keelboats between the preparatory signal of the first race and the end of the regatta.

# Delta Lloyd Regatta 2015

for

## Olympic and Paralympic Classes

### 19. RADIO COMMUNICATION

Except in an emergency, a boat shall neither make nor receive radio transmissions, text messages or cellular phone calls while racing except in an emergency or when using equipment provided by the race committee.

### 20. PRIZES

Medals will be awarded to the top 3 boats in each Olympic and Paralympic event. The Organising Authority may alter prizes if less than 10 boats are entered in an event.

### 21. INSURANCE

Each participating boat must hold third party liability insurance with a minimum cover of at least 1.500.000 Euros (or equivalent) per incident.

### 22. DISCLAIMER OF LIABILITY

Competitors participate in the regatta entirely at their own risk. See rule 4, Decision to Race. Neither the Organising Authority nor EUROSAF will accept any liability for material damage or personal injury or death sustained in conjunction with or prior to, during, or after the regatta.

### 23. MEDIA RIGHTS, CAMERAS AND ELECTRONIC EQUIPMENT

- 23.1 By participating in an event of the EUROSAF Champions Sailing Cup competitors automatically grant to the Organising Authority, EUROSAF and their sponsors, the right in perpetuity to make, use and show, from time to time at their discretion, any motion pictures and live, taped or filmed television and other reproductions of the athlete during the period of the competition without compensation.
- 23.2 By participating in an event of the EUROSAF Champions Sailing Cup event competitors accept to receive event information from EUROSAF Champions Sailing Cup Organising Authorities
- 23.3 Boats may be required to carry cameras, sound equipment and positioning equipment as specified by the Organising Authority.
- 23.4 The top three competitors as well as the individual race winners may be required to attend a media press conference each day.
- 23.5 Competitors may be required for interviews at the regatta.

### 24. FURTHER INFORMATION

Delta Lloyd Regatta  
PO Box 90466, 1006 BL Amsterdam, The Netherlands  
[www.deltalloydregatta.org](http://www.deltalloydregatta.org)  
t: +31 (0)20-5795400  
f: +31(0)20-5795401

Information for press: [press@deltalloydregatta.org](mailto:press@deltalloydregatta.org)  
Information for entry: [entry@deltalloydregatta.org](mailto:entry@deltalloydregatta.org)  
General information: [info@deltalloydregatta.org](mailto:info@deltalloydregatta.org)

# Delta Lloyd Regatta 2015

for

## Olympic and Paralympic Classes

===== ADDENDA =====

### **NoR ADDENDUM A**

#### **EUROSAF Champions Sailing Cup Series**

##### **A1 Regattas**

The 2015 EUROSAF Champions Sailing Cup Series is comprised of the following regattas:

- Trentino Garda Olympic Week - Riva del Garda, Italy
- Delta Lloyd Regatta - Medemblik, the Netherlands
- Kieler Woche - Kiel, Germany
- Semaine Olympique Francaise - La Rochelle, France

EUROSAF may add additional regattas to the series in the future.

##### **A2 Property**

The EUROSAF Champions Sailing Cup is owned by EUROSAF.

##### **A3 Prizes and EUROSAF Champions Sailing Cup Ranking Points**

- A3.1 EUROSAF will award prizes to the top 3 boats, in each class, in the Champions Sailing Cup competition.
- A3.2 The date, time and location of the of the EUROSAF Champions Sailing Cup prize giving, if any, will be announced by EUROSAF.
- A3.3 A boat placing first, second or third in the regatta will forfeit their EUROSAF European Sailing Cup Rankings points if they fail to attend the prize giving ceremony without prior written permission from the Organising Authority.

=====

## NoR ADDENDUM B

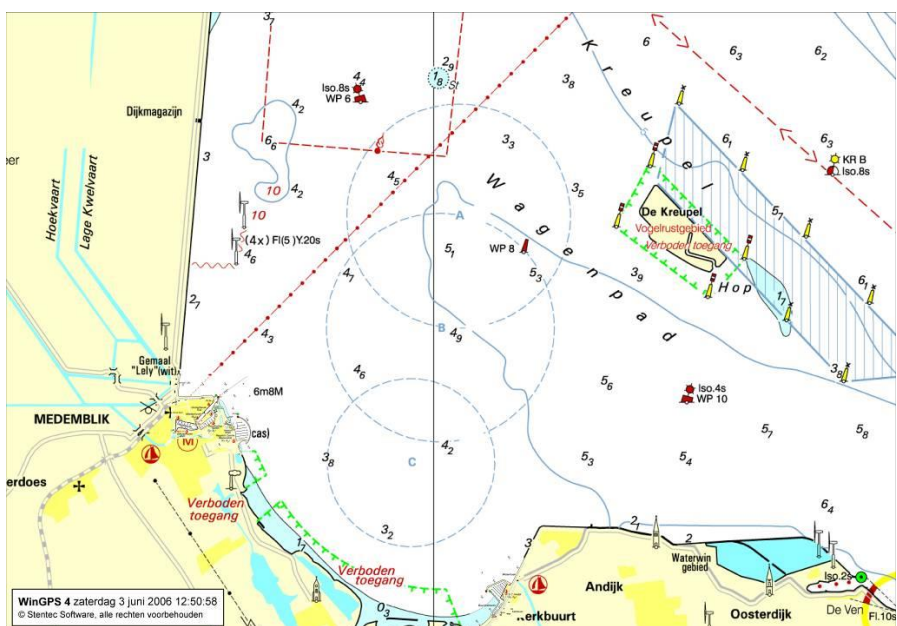
The regatta will be at the Regatta Center Medemblik



=====

## NoR ADDENDUM C

Approximate location of the racing areas:



(Based on version 1 dated 28/09/14)