

2017 RS:X WINDSURFING EUROPEAN CHAMPIONSHIPS & OPEN TROPHY
including the 2017 Marseille RS:X U21 Windsurfing Championships
and
2017 RS:X WINDSURFING YOUTH EUROPEAN CHAMPIONSHIPS & YOUTH OPEN TROPHY
including the 2017 Marseille RS:X U17 Windsurfing Championships

May 6th - 13th 2017 Marseille, France



SAILING INSTRUCTIONS

In these sailing instructions Division A & B sailors [Class Rule C.2.3(a)] entered in the 2017 RS:X Windsurfing European Championships & Open Trophy and the 2017 Marseille RS:X U21 European Windsurfing Championships are referred to as 'Senior(s)';

Division C sailors [Class Rule C.2.3 (b)(i)] entered in the 2017 RS:X Windsurfing Youth European Championships & Youth Open Trophy and the 2017 Marseille RS:X U17 European Windsurfing Championships are referred to as 'Youth(s)'.

Where there is no reference to either 'Senior(s)' or 'Youth(s)' the rules below refer to all Divisions

[DP] denotes a rule for which the penalty is applied according to the RRS Introduction - Notation.

[NP] denotes that a breach of this rule will not be grounds for a protest by a board.

[SP] denotes a rule for which a standard penalty may be applied by the race committee without a hearing.

1. RULES

- 1.1 The regatta will be governed by the rules as defined in The Racing Rules of Sailing (RRS).
- 1.2 The prescriptions of the Federation Francaise de Voile will apply as posted on the Official Notice Board.
- 1.3 Divisions A and B shall only use the Mark 2 fin and Mark 2 centreboard. This changes the RS:X Class Rule C.7(d)(i).
- 1.4 Division C shall only use the Mark 2 or Mark 1 fin and Mark 2 centreboard. This changes the RS:X Class Rule C.7(d)(ii).
- 1.5 The following Class Rules shall be deleted for Division C sailors only: C.6.5(b), C.7.4(b) and C.9.2(b).
- 1.6 Identification on Sails: a '-' may be applied between the national letters and sail number. This changes RRS Appendix B9.
- 1.7 If there is a conflict between languages the English text will take precedence.
- 1.8 Decisions on Protests Concerning Class Rules: RRS 64.3(a) shall not apply.
- 1.9 Add in the list of rules in RRS 63.1 rule 64.4(b).
- 1.10 For Final Races, World Sailing Addendum Q, *Umpired Fleet Racing*, will apply and takes precedence over any conflicting instructions.

1.11 Decisions of the International Jury will be final as provided in RRS 70.5.

2. [DP] [NP] ADDITIONAL IDENTIFICATION

2.1 When the Organizing Authority supplies bibs, the competitors shall wear it of the same colour as the fleet in which they are racing that day (see SI 9 – Fleets, Class Flags & Colours).

2.2 For the first day of single fleets and the duration of Qualification Series for split fleets the top 3 seeds (based on their ranking in the 2016 European Championships for seniors and 2016 Youth European Championships for youth), shall wear bibs as follows: 1st - yellow, 2nd - blue and 3rd - red. From the second day for single fleets and beginning of Advance (Gold/Silver) Series for split fleets the 1st, 2nd and 3rd placed competitors shall wear, for that day only, a yellow, blue or red bib respectively.

2.3 When the Organizing Authority supplies the self-adhesive discs of the same colour as bib, the competitors shall apply it on both sides of their sail next to, and at the same level as, the sail number.

2.4 Bib shall be worn outside other clothing while racing. Competitors shall not deliberately cut or tear them.

3. CAMERAS AND ELECTRONIC EQUIPMENT

3.1 [DP] [NP] Competitors may be required to carry on their boards cameras, sound equipment or positioning equipment as specified by the Organising Authority. Those competitors competing in the same race that are not issued with such equipment shall carry an equivalent weight in the same position as issued by the Organising Authority.

3.2 [NP] Personal Cameras and their attachments may be carried provided that they do not affect the function or use of any existing part of the board or associated equipment.

3.2.1 Any footage or recording is to be made available to the RS:X Class Association upon request.

3.3 The use of motion pictures by the LOA and the RS:X Class Association as referred to in Notice of Race 21.1 also relates to video taken by competitors.

4. NOTICES TO COMPETITORS

4.1 Notices to competitors will be posted on the Official Notice Board.

5. CHANGES TO SAILING INSTRUCTIONS

5.1 Any change to the Sailing Instructions is subject to the approval of the Class Course Representative and will be posted no later than two hours before the warning signal of the race on the day it will take effect, except that any change to the schedule of races will be posted by 2000 on the day before it will take effect.

6. SIGNALS MADE ASHORE

6.1 Signals made ashore will be displayed at the Official Flagpole.

6.2 A change to the intended race area (SI 10.2) will be signalled by the display of race area flags (SI 10.1) over the relevant class flags no later than 60 minutes before the removal of AP ashore

6.3 [DP] [NP] When Flag AP is displayed ashore competitors shall not go afloat. '1 minute' is replaced with 'not less than 30 minutes' in the race signal AP. This changes RRS Race Signals.

6.4 [DP] [NP] On the last day of racing and if Final Races are scheduled, boards shall not launch until the display of:

Race	Signal
Men's Final Races	Flag M over Men's Gold Fleet Class Flag
Women's Final Races	Flag M over Women's Fleet Class Flag
Last Race	Flag D alone

7. FORMAT OF RACING

- 7.1 The regatta consists of an Opening Series and a Final Races. If the event is split into fleets, the Opening Series will be divided into a Qualifying Series and a Advance (Gold/Silver) Series.
- 7.2 Division A (Senior Men) and division B (Senior Women) shall start separately but will sail on the same Senior course area.
- 7.3 Division C (Youth) Men and Women shall start separately but will sail on the same Youth course area.
- 7.4 Any other division(s) referred to in the appropriate Notice of Race will race in the fleets of the appropriate 'Open Trophy'. When racing is to be in more than one fleet, the number of fleets and the assignment of competitors to fleets are at the discretion of the Class Course Representative. This is not ground for redress. This changes RRS 62.1(a).
- 7.5 The number of fleets is likely to be based on the number of entries as follows:

Entries	Fleets
< 50	1
51-60	1 or 2
> 60	2

7.6 Qualifying Series

- 7.6.1 Boards will be assigned to Yellow and Blue fleets of, as nearly as possible, equal size and ability according to their ranking in the 2016 World Championships, then their ranking in the 2016 European Championships and finally in random order. Those assignments will be posted by 2100 on the day before the first scheduled race.
- 7.6.2 Boards will be reassigned to fleets after each day of racing, except if on the first day of racing fewer than two races are completed by both fleets. If all fleets have completed the same number of races, boards will be reassigned on the basis of their ranks in the series. If all fleets have not completed the same number of races, the series score for reassignment will be calculated for those races, numbered in order of completion, completed by both fleets. Reassignments will be made as follows:

Rank in Series	Fleet Assignment
First	Yellow
Second	Blue
Third	Blue
Fourth	Yellow
Fifth	Yellow
Sixth	Blue

and so on. If two or more boards have a same rank, they will be entered in the left column in the order of fleets in SI 7.6.1.

- 7.6.3 In the case of an odd number of competitors, the last competitor to be assigned will race in Yellow fleet.
- 7.6.4 Fleet assignments will be based on the ranking available at 2100 that day regardless of protests or request for redress not yet decided.

7.6.5 If both fleets have not completed the same number of races by the end of a day, the fleets with fewer races will continue racing the following day until all fleets have completed the same number of races. All boards will thereafter race in the new fleets.

7.7 Advance (Gold/Silver) Series

7.7.1 Boards will be assigned to the Gold and Silver fleets on the basis of their ranks in the Qualifying Series (discards applied) but with no ties broken.

7.7.2 The fleet lists shall be posted at least 2 hours before the first scheduled warning signal of the first race of the Advance (Gold/Silver) Series.

7.7.3 The top 50% of sailors will race in Gold fleet, with the rest in Silver fleet, but at the break point, any competitors with the same score will race in Gold fleet. In the case of an odd number of competitors Gold fleet shall be larger than Silver fleet.

7.7.4 In Advance (Gold/Silver) Series there will be the same number (and approximate size) of fleets as in Qualifying Series

7.7.5 Any recalculation of Qualifying Series overall rankings after competitors have been assigned to Advance (Gold/Silver) Series fleets will not affect the assignments except that a redress decision may promote a competitor to a higher fleet.

7.8 Finals

7.8.1 At 2100 on the penultimate day the top twelve competitors in the overall rankings of Opening Series will be assigned to sail in the Finals. The International Jury may extend this time limit.

7.8.2 Three Final races are scheduled on the last day

7.8.2.1 A one race Quarter Final for the 12 highest ranked boards from the Opening Series.

7.8.2.2 A one race Semi Final for the 6 highest ranked boards from the Quarter Final.

7.8.2.3 A one race Grand Final for the 3 highest ranked boards from the Semi Final.

8. SCHEDULE

8.1 Event Schedule:

Date	Day	Times	Event
May 6 th	Saturday	1000-1500hrs	Registration & Equipment Check
May 7 th	Sunday	0900-1200hrs 1500hrs 1630hrs 1800hrs	Registration & Equipment Check Practice Race Coaches Meeting Opening Ceremony
May 8 th	Monday	0900hrs 1100hrs	Coaches Meeting Races
May 9 th	Tuesday	0900hrs 1100hrs	Coaches Meeting Races
May 10 th	Wednesday		Reserve Day
May 11 th	Thursday	0900hrs 1100hrs	Coaches Meeting Races
May 12 th	Friday	0900hrs 1100hrs	Coaches Meeting Races
May 13 th	Saturday	0900hrs 1100hrs 1700hrs 1900hrs	Coaches Meeting Finals & Last Race Last possible warning signal Prize Giving & Closing Ceremony
May 14 th	Sunday		Departure

This changes NOR 6.3

- 8.2 12 (twelve) Opening series races are scheduled over 4 (5 in case Reserve Day is used) days followed by 1 (one) Opening Series race on the last day for boards that do not qualify for the Finals.
- 8.3 The Reserve Day may be used for racing but only to achieve completion of 4 races for each fleet. When the reserve day is used 3 races will be scheduled.
- 8.4 Qualifying Series will consist of a maximum of 6 races and a minimum of 4 races, sailed for a minimum of 2 days or as long as necessary for both fleets to complete 4 races.
- 8.5 Advance (Gold/Silver) Series will run for a maximum of 3 days with a maximum of 7 races (6 races for those assigned to the Finals).
- 8.6 Three Final races are scheduled for Senior Men, Senior Women, Youth Men and Youth Women.
- 8.7 On the Last Day
- 8.7.1 if fewer than 4 races have been completed for split fleets, then the last day continues as Qualifying Series.
- 8.7.2 if fewer than 2 Advance (Gold/Silver) Series races for split fleets and fewer than 6 races for single fleets have been completed then the last day will continue as Advance/Opening Series.
- 8.7.3 if 2 or more Advance (Gold/Silver) Series races for split fleets and 6 or more Opening Series races for single fleets have been completed then competitors will race in the Finals or, for those not assigned to the Finals an additional Advance/Opening Series race.
- 8.8 The scheduled time of the warning signal for the first race each day is 1100.
- 8.9 The warning signal for each succeeding race will be made as soon as practicable after the finish of the previous race.
- 8.10 To alert competitors that a race or sequence of races will begin soon, the orange starting line flag will be displayed (with one sound) for at least five minutes before a warning signal is made.
- 8.11 The warning signal for the last race of each day shall not be made within 60 minutes of the official sunset time unless after a postponement during a start sequence or a general recall.
- 8.12 On the last day of the regatta no warning signal will be made after 1700 unless after a postponement during a start sequence or a general recall.

9. FLEETS, CLASS FLAGS & COLOURS

- 9.1 The description of Class flags and bibs will be as follows:

<i>Fleet</i>	<i>Bib</i>	<i>Class Flag</i>
Men Yellow/Gold	White	White flag with RS:X logo
Men Blue/Silver	Black	Black flag with RS:X logo
Women	Purple	Purple flag with RS:X logo
Youth Men Yellow/Gold	Orange	Orange flag with RS:X logo
Youth Men Blue/Silver	Green	Green flag with RS:X logo
Youth Women	Pink	Pink flag with RS:X logo

10. RACING AREAS

- 10.1 Addendum A shows the Racing areas. A white flag with the letter of the race area in black designates that race area.
- 10.2 The intended assignments of either Seniors or Youths to a specific race area will be posted on the Official Notice Board.
- 10.3 The racing area is defined as an area extending 75 meters beyond the entire course in which a competitor would normally sail while racing.

10.4 **[DP]** Boards not assigned to race on an area shall avoid that area.

11. THE COURSES

- 11.1 Addendum B shows the courses, including the course signals, approx. angles between legs, the order in which marks are to be passed, and the side on which each mark is to be left.
- 11.2 At the discretion of the Class Course Representative the course will be Trapezoidal or Windward-Leeward Courses for Opening Series. The courses may have slalom ends.
- 11.3 For the Finals the course will be, at the discretion of the Class Course Representative, a Windward-Leeward course on non-planing racing conditions or Reaching Start course (RRS Appendix B3.26.2 Starting System 2 and B10.29 Recalls applies) on planing racing conditions. For reaching starts RRS B2.17 shall apply.
- 11.4 If a gate is replaced by a single mark, it shall be left to port.

12. MARKS

- 12.1 Marks 1, 2, 3, 4 and all slalom marks and change marks will all be inflatable buoys.
- 12.2 The starting marks will be a Race Committee Signal Boat at the starboard end of the start line and a Race Committee Pin-end Boat or a laid mark.
- 12.3 The finishing marks will be a Race Committee Boat and a laid mark.
- 12.4 The colour and shape of inflatable marks and laid marks will be as follows:

Senior Course Area	
Course Marks 1, 2, 3S, 3P, 4S, 4P	White Cylindrical
Course Marks 1A, 2A	Orange Cylindrical
Replacing Marks	Yellow Cylindrical
Marks S1, S2, S3	Yellow Tetrahedral
Laid Finish Mark	Green Cylindrical
Youth Course Area	
Course Marks 1, 2, 3S, 3P, 4S, 4P	Orange Cylindrical
Replacing Marks	Yellow Cylindrical
Marks S1, S2, S3	Yellow Tetrahedral
Laid Finish Mark	Green Cylindrical

12.5 A boat that is a mark may not be anchored, but held in place by the use of an engine. This will not be grounds for redress, provided the boat remains close to her correct position. This changes RRS 62.1(a).

13. THE START

- 13.1 Windward Start races will be started by using RRS B3.26.1 with the warning signal made 5 minutes before the starting signal.
- 13.2 Reaching Start races will be started by using RRS B3.26.2.
- 13.3 The starting line will be between the staff displaying an orange flag on the race committee vessel at the starboard end and either
- 13.3.1 The course side of the port-end inflatable starting mark, or
- 13.3.2 A staff displaying an orange flag on the race committee vessel at the port end.
- 13.4 **[DP]** When a starting sequence is in progress, competitors whose warning signal has not been made shall avoid the starting area. The starting area is defined as a rectangle 75 meters from the starting line and marks in all directions.
- 13.5 A competitor starting later than 4 minutes after her starting signal will be scored Did Not Start (DNS) without a hearing. This changes RRS A4 and A5.

14. CHANGE OF THE NEXT LEG OF THE COURSE

- 14.1 To change the next leg of the course, the race committee will lay a new mark (or move the finishing line) and remove the original mark as soon as practicable. When in a subsequent change a new mark is replaced, it will be replaced by an original mark.

15. SHORTENING COURSE

- 15.1 During the races, the Race Committee may shorten the course according to RRS 32.

16. THE FINISH

- 16.1 The finishing line will be between the staff displaying a blue flag on the finishing mark and the course side of the laid mark (or the flag staff on this mark if present) at the other end of the finish line.

17. PENALTY SYSTEM

- 17.1 Penalties for breaches of rules in the Sailing Instructions marked **[SP]** will be 1 point for each infringement. The penalty is applied to each race (except the Finals) in which the instruction was infringed except that for a breach of SI 21.2:

17.1.1 Failure to Check-Out will result in 1 point penalty for the next race completed even if no race is completed on the day of the infringement.

17.1.2 Failure to Check-In will result in 1 point penalty for the last race completed even if no race is completed on the day of the infringement.

17.1.3 Only one 1 point penalty for infringements of SI 17.1.1 and SI 17.1.2 will be applied to any one race.

- 17.2 If penalties referred to in SI 17.1 are applied by the Race Committee:

17.2.1 they will be applied without a hearing. This changes RRS 63.1 and A5.

17.2.2 a competitor shall not be scored worse than a disqualified competitor.

17.2.3 they will be posted on the Official Notice Board within one hour of the protest time limit.

18. TIME LIMITS AND TARGET TIMES

- 18.1 Time limits and target times are in minutes and as follows:

	<i>Time Limit</i>	<i>Mark 1 Time Limit</i>	<i>Finish Window</i>	<i>Target Time</i>
Windward Start Races	40	15	15	20-25
Reaching Start Quarter Final Race	25		5	15-18
Reaching Start Semi Final Race	20		5	10-12
Reaching Start Grand Final Race	15		5	6-8

- 18.2 Competitors failing to finish within the time stated in the Finish Window, after the first competitor in that group sails the course and finishes, will be scored Did Not Finish (DNF). This changes RRS 35, A4 and A5.

19. PROTESTS AND REQUESTS FOR REDRESS

- 19.1 Protest forms are available at the Race Office. Protests and requests for redress or reopening shall be delivered there within the protest time limit.

- 19.2 For each fleet, the protest time limit is 60 minutes after the last competitor has finished the last race of the day for that fleet or when the race committee signals no more racing today, whichever is later.

- 19.3 Notices will be posted within 30 minutes of the protest time limit to inform competitors of hearings in which they are parties or named as witnesses.

- 19.4 Hearings will be held in the Protest Room.
- 19.5 Notices of protests by the Race Committee, Technical Committee or International Jury will be posted within the protest time limit to inform competitors under RRS 61.1(b).
- 19.6 Breaches of Class Rules C.1.2, C9.2 and rules in the Sailing Instructions marked **[NP]** will not be grounds for a protest by a competitor. This changes RRS 60.1(a).
- 19.7 On the last scheduled day of a competitor's Series (Qualification or Advance/Opening), a request for reopening a hearing shall be delivered within the protest time limit if the requesting party was informed of the decision on the previous day, or no later than 30 minutes after the requesting party was informed of the decision on that day. This changes RRS 66.
- 19.8 On the last scheduled day of a competitor's Series (Qualification or Advance/Opening), request for redress from a International Jury decision shall be delivered no later than 30 minutes after the decision was posted. This changes RRS 62.2.

20. SCORING

- 20.1 As stated in NoR Addendum FS – Format & Scoring.
- 20.2 To request correction of an alleged error in posted results, a competitor may complete a Scoring Enquiry Form available at the Race Office.
- 20.3 The scoring abbreviation for a penalty imposed under SI 17.1 will be SCP.
- 20.4 For Qualification Series, scores are based on the number of competitors assigned to the largest fleet in that Series. This changes RRS A4.2.
- 20.5 For those competitors not assigned to the Finals and scheduled to an additional Opening Series race as detailed in SI 8.7.3, the first finisher will be scored 13 points, second 14 points and so on.
- 20.6 When racing in multiple fleets, competitors assigned to Gold fleet will be ranked higher in the regatta than competitors assigned to Silver fleet and so forth.
- 20.7 Competitors assigned to compete in the Finals will be ranked highest in the regatta except for a competitor disqualified from Finals under RRS 5, 6, 7 or 69.

21. [DP] [NP] SAFETY REGULATIONS

- 21.1 **[SP]** In accordance with Class Rules C.1.2 competitors shall carry a whistle and a 5 m tow rope.
- 21.2 **[SP]** Check-Out; Check-In:
 - 21.2.1 When going out to race each competitor intending to race shall personally sign against their name and / or sail number.
 - 21.2.2 On returning ashore, even after the display of AP/H, AP/A, N/H or N/A when no race has been completed after launching, each competitor shall personally sign, against their name and / or sail number, within the protest time limit or within 60 minutes of the display of AP/H, AP/A, N/H or N/A.
 - 21.2.3 Check-Out Lists and Check-In Lists will be available at the Event Tent in Base Nautique du Roucas Blanc.
- 21.3 A competitor that retires from a race shall notify the Race Committee as soon as possible and shall complete a Retirement Declaration Form, available from the Race Office, within the protest time limit.
- 21.4 Competitors not racing for any of the racing days shall inform the Race Office.
- 21.5 When the Race Committee displays flag V with repetitive sounds, all official and support boats shall monitor the Race Committee VHF channel for instructions and assist in search and rescue operations.

22. [DP] REPLACEMENT OF EQUIPMENT

- 22.1 Substitution of damaged or lost equipment will not be allowed unless authorised by the Technical Committee.
- 22.2 **Replacement ashore:** Requests for substitution of damaged or lost equipment shall be made in writing on a form available at the Race Office and delivered there for consideration. Any request shall be made at the first reasonable opportunity.
- 22.3 **Replacement afloat:** When an item of equipment is damaged or lost shortly before a race and is replaced, the competitor shall notify the Race Committee before the warning signal. As soon as practicable after coming ashore and within the protest time limit, the competitor shall comply with SI 22.2 and the replaced item shall be presented to the Technical Committee.

23. [DP] EQUIPMENT AND MEASUREMENT CHECKS

- 23.1 Only marked equipment shall be used at this event. 'Fast-check' stickers and instructions on placement will be issued to each competitor at registration. Registration and marking shall be completed as follows:
- 23.1.1 Competitors shall apply the issued stickers, in compliance with the instructions, to one set of equipment to be used for the entire event.
- 23.1.2 Fins shall be presented to the Technical Committee for stamping.
- 23.2 The Technical Committee will, as far as possible, answer competitors' questions relating to measurement and Class rules.
- 23.3 Stamped/marked equipment shall not be removed from the venue, the racing area and the waters leading to them, without prior written permission of the Technical Committee.
- 23.3.1 The venue will be defined and that definition placed on the Official Notice Board.
- 23.4 Equipment may be inspected at any time for compliance with the class rules and the sailing instructions according to the following procedures:
- 23.4.1 A competitor may be instructed by the Technical Committee, either ashore or on the water, to proceed immediately to the Inspection Area for inspection.
- 23.4.2 Until permission is given by the Technical Committee, a competitor once instructed to proceed for inspection, shall have no unauthorised contact with any support personnel, no person shall join or leave the board, no equipment or other item shall be taken on or off that board and the board shall not leave the Inspection Area.

24. [DP] [NP] ADVERTISING

- 24.1 Each competitor shall place stickers issued by the Organising Authority, back to back on the sail immediately below batten 5 and as close to the leach as possible but without overlapping the sail corner reinforcement. Competitors shall not cut or adapt the stickers in any way.

25. LOCATIONS OF IMPORTANCE

- 25.1 The Race Office is located at the organization desk in Base Nautique du Roucas Blanc.
- 25.2 The Official Notice Board is located at the Event Tent in Base Nautique du Roucas Blanc.
- 25.3 The Official Flagpole is located in front of the organization space of the Base Nautique du Roucas Blanc .
- 25.4 The Equipment Inspection area is located at the Event Tent in Base Nautique du Roucas Blanc.
- 25.5 The Jury Room is located at the Jury space of the Base Nautique du Roucas Blanc.

26. OFFICIAL BOATS

26.1 Official boats will be marked as follows:

Boat	Flag
Jury and Umpires	Yellow flag with black letters JURY
Race Committee	Any flag with letter of the racing area or with "RC"
Measurer	Yellow flag with black letter M
Rescue	Orange flag with black letters ORGA
Press, Media	Orange flag with black letters MEDIA

26.2 Actions by the official boats or helicopters shall not be grounds for redress by a competitor. This changes RRS 62.1(a).

27. [DP] SUPPORT BOATS

27.1 Support Persons shall comply with the Support Boat Regulations. See Addendum C.

28. [DP] TRASH DISPOSAL

28.1 Trash may be placed aboard support and Race Committee boats.

29. [DP] RADIO COMMUNICATION

29.1 While on the water, a competitor shall not carry equipment capable of making radio transmissions or receiving radio communications, except for equipment provided by the Organising Authority. This restriction also applies to mobile telephones.

29.2 For purposes of safety, support boats may monitor the Race Committee working channel, but cannot transmit on this channel except in the case of an emergency.

30. PRIZES

30.1 Prizes will be awarded according to the Notice of Race.

31. DISCLAIMER OF LIABILITY

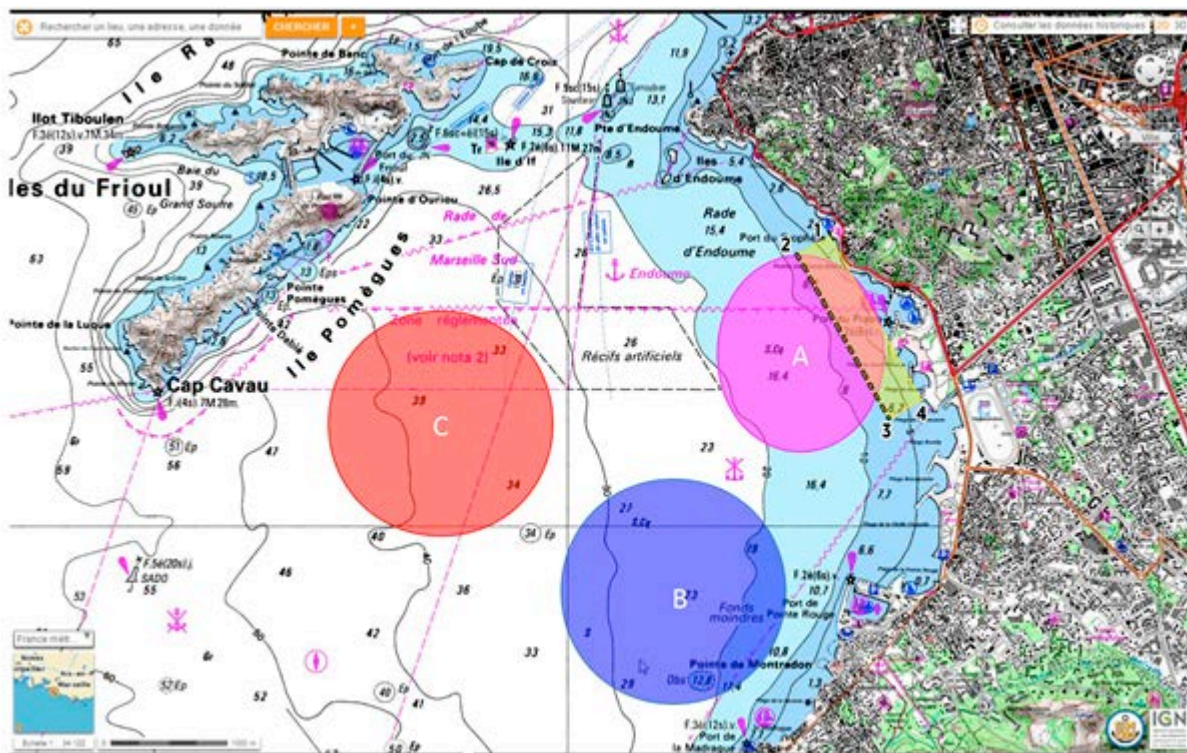
31.1 Competitors participate in the regatta entirely at their own risk. See RRS 4, Decision to Race. The Organising Authority will not accept any liability for material damage or personal injury or death sustained in conjunction with or prior to, during, or after the regatta.

32. INSURANCE

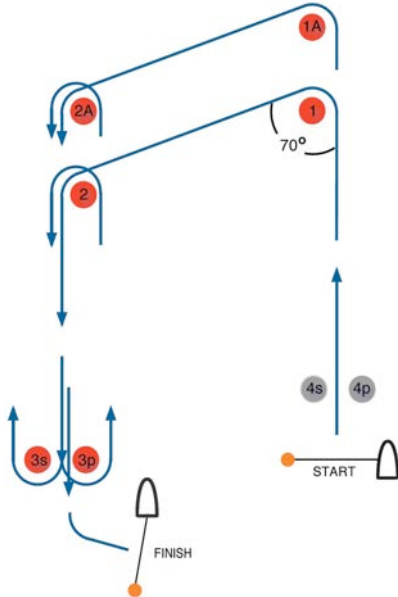
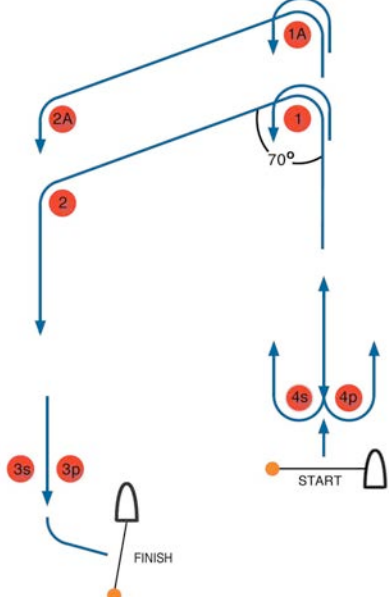
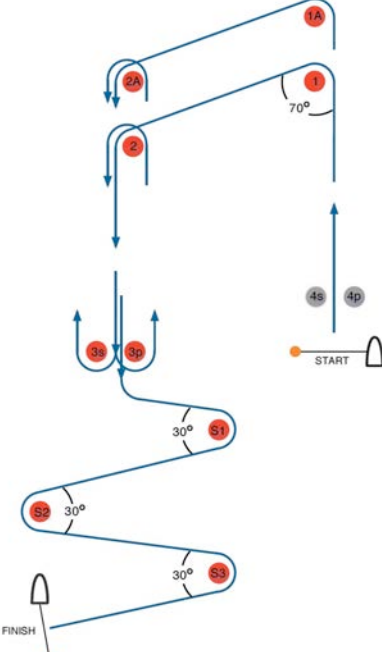
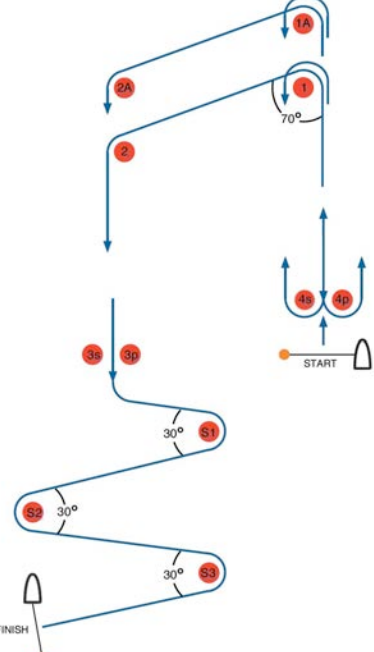
32.1 Each participating competitor shall be insured with valid third-party liability insurance with a minimum cover of €1,000,000 per event or the equivalent.

32.2 Support boat drivers shall also have valid third-party liability insurance with a minimum cover of €1,500,000 per event or the equivalent.


ADDENDUM A – CHART SHOWING RACING AREA



ADDENDUM B1 – COURSES FOR WINDWARD STARTS

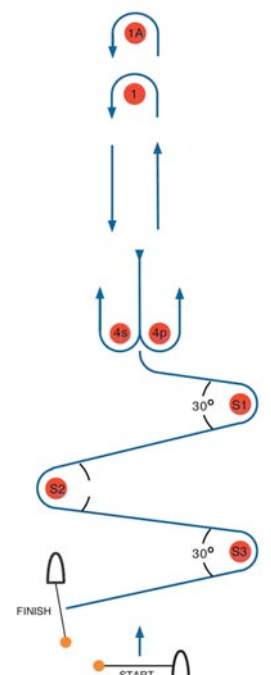
<p>O</p>  <table border="1" style="width: 100%; border-collapse: collapse; margin-top: 10px;"> <thead> <tr> <th style="width: 15%;">Signal</th> <th>Mark rounding order</th> </tr> </thead> <tbody> <tr> <td>O2</td> <td>Start - 1 - 2 - 3s/3p - 2 - 3p - Finish</td> </tr> <tr> <td>OE2</td> <td>Start - 1A - 2A - 3s/3p - 2A - 3p - Finish</td> </tr> <tr> <td>O3</td> <td>Start - 1 - 2 - 3s/3p - 2 - 3s/3p - 2 - 3p - Finish</td> </tr> <tr> <td>OE3</td> <td>Start - 1A - 2A - 3s/3p - 2A - 3s/3p - 2A - 3p - Finish</td> </tr> </tbody> </table>	Signal	Mark rounding order	O2	Start - 1 - 2 - 3s/3p - 2 - 3p - Finish	OE2	Start - 1A - 2A - 3s/3p - 2A - 3p - Finish	O3	Start - 1 - 2 - 3s/3p - 2 - 3s/3p - 2 - 3p - Finish	OE3	Start - 1A - 2A - 3s/3p - 2A - 3s/3p - 2A - 3p - Finish	<p>I</p>  <table border="1" style="width: 100%; border-collapse: collapse; margin-top: 10px;"> <thead> <tr> <th style="width: 15%;">Signal</th> <th>Mark rounding order</th> </tr> </thead> <tbody> <tr> <td>I2</td> <td>Start - 1 - 4s/4p - 1 - 2 - 3p - Finish</td> </tr> <tr> <td>IE2</td> <td>Start - 1A - 4s/4p - 1A - 2A - 3p - Finish</td> </tr> <tr> <td>I3</td> <td>Start - 1 - 4s/4p - 1 - 4s/4p - 1 - 2 - 3p - Finish</td> </tr> <tr> <td>IE3</td> <td>Start - 1A - 4s/4p - 1A - 4s/4p - 1A - 2A - 3p - Finish</td> </tr> </tbody> </table>	Signal	Mark rounding order	I2	Start - 1 - 4s/4p - 1 - 2 - 3p - Finish	IE2	Start - 1A - 4s/4p - 1A - 2A - 3p - Finish	I3	Start - 1 - 4s/4p - 1 - 4s/4p - 1 - 2 - 3p - Finish	IE3	Start - 1A - 4s/4p - 1A - 4s/4p - 1A - 2A - 3p - Finish
Signal	Mark rounding order																				
O2	Start - 1 - 2 - 3s/3p - 2 - 3p - Finish																				
OE2	Start - 1A - 2A - 3s/3p - 2A - 3p - Finish																				
O3	Start - 1 - 2 - 3s/3p - 2 - 3s/3p - 2 - 3p - Finish																				
OE3	Start - 1A - 2A - 3s/3p - 2A - 3s/3p - 2A - 3p - Finish																				
Signal	Mark rounding order																				
I2	Start - 1 - 4s/4p - 1 - 2 - 3p - Finish																				
IE2	Start - 1A - 4s/4p - 1A - 2A - 3p - Finish																				
I3	Start - 1 - 4s/4p - 1 - 4s/4p - 1 - 2 - 3p - Finish																				
IE3	Start - 1A - 4s/4p - 1A - 4s/4p - 1A - 2A - 3p - Finish																				
<p>OS</p>  <table border="1" style="width: 100%; border-collapse: collapse; margin-top: 10px;"> <thead> <tr> <th style="width: 15%;">Signal</th> <th>Mark rounding order</th> </tr> </thead> <tbody> <tr> <td>OS2</td> <td>Start - 1 - 2 - 3s/3p - 2 - 3p - S1 - S2 - S3 - Finish</td> </tr> <tr> <td>OES2</td> <td>Start - 1A - 2A - 3s/3p - 2A - 3p - S1 - S2 - S3 - Finish</td> </tr> <tr> <td>OS3</td> <td>Start - 1 - 2 - 3s/3p - 2 - 3s/3p - 2 - 3p - S1 - S2 - S3 - Finish</td> </tr> <tr> <td>OES3</td> <td>Start - 1A - 2A - 3s/3p - 2A - 3s/3p - 2A - 3p - S1 - S2 - S3 - Finish</td> </tr> </tbody> </table>	Signal	Mark rounding order	OS2	Start - 1 - 2 - 3s/3p - 2 - 3p - S1 - S2 - S3 - Finish	OES2	Start - 1A - 2A - 3s/3p - 2A - 3p - S1 - S2 - S3 - Finish	OS3	Start - 1 - 2 - 3s/3p - 2 - 3s/3p - 2 - 3p - S1 - S2 - S3 - Finish	OES3	Start - 1A - 2A - 3s/3p - 2A - 3s/3p - 2A - 3p - S1 - S2 - S3 - Finish	<p>IS</p>  <table border="1" style="width: 100%; border-collapse: collapse; margin-top: 10px;"> <thead> <tr> <th style="width: 15%;">Signal</th> <th>Mark rounding order</th> </tr> </thead> <tbody> <tr> <td>IS2</td> <td>Start - 1 - 4s/4p - 1 - 2 - 3p - S1 - S2 - S3 - Finish</td> </tr> <tr> <td>IES2</td> <td>Start - 1A - 4s/4p - 1A - 2A - 3p - S1 - S2 - S3 - Finish</td> </tr> <tr> <td>IS3</td> <td>Start - 1 - 4s/4p - 1 - 4s/4p - 1 - 2 - 3p - S1 - S2 - S3 - Finish</td> </tr> <tr> <td>IES3</td> <td>Start - 1A - 4s/4p - 1A - 4s/4p - 1A - 2A - 3p - S1 - S2 - S3 - Finish</td> </tr> </tbody> </table>	Signal	Mark rounding order	IS2	Start - 1 - 4s/4p - 1 - 2 - 3p - S1 - S2 - S3 - Finish	IES2	Start - 1A - 4s/4p - 1A - 2A - 3p - S1 - S2 - S3 - Finish	IS3	Start - 1 - 4s/4p - 1 - 4s/4p - 1 - 2 - 3p - S1 - S2 - S3 - Finish	IES3	Start - 1A - 4s/4p - 1A - 4s/4p - 1A - 2A - 3p - S1 - S2 - S3 - Finish
Signal	Mark rounding order																				
OS2	Start - 1 - 2 - 3s/3p - 2 - 3p - S1 - S2 - S3 - Finish																				
OES2	Start - 1A - 2A - 3s/3p - 2A - 3p - S1 - S2 - S3 - Finish																				
OS3	Start - 1 - 2 - 3s/3p - 2 - 3s/3p - 2 - 3p - S1 - S2 - S3 - Finish																				
OES3	Start - 1A - 2A - 3s/3p - 2A - 3s/3p - 2A - 3p - S1 - S2 - S3 - Finish																				
Signal	Mark rounding order																				
IS2	Start - 1 - 4s/4p - 1 - 2 - 3p - S1 - S2 - S3 - Finish																				
IES2	Start - 1A - 4s/4p - 1A - 2A - 3p - S1 - S2 - S3 - Finish																				
IS3	Start - 1 - 4s/4p - 1 - 4s/4p - 1 - 2 - 3p - S1 - S2 - S3 - Finish																				
IES3	Start - 1A - 4s/4p - 1A - 4s/4p - 1A - 2A - 3p - S1 - S2 - S3 - Finish																				

L



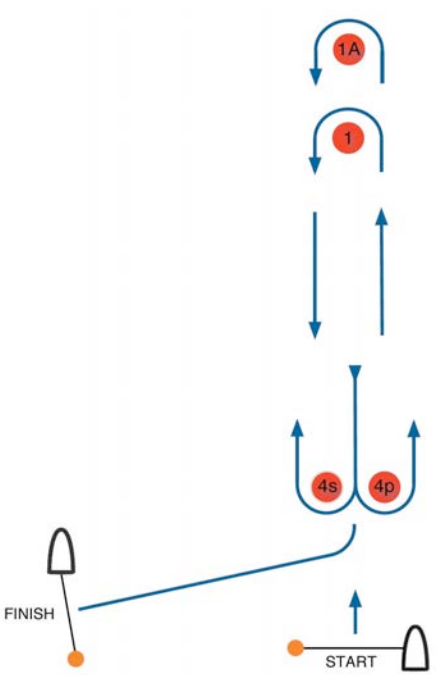
Signal	Mark rounding order
L2	Start - 1 - 4s/4p - 1 - Finish
LE2	Start - 1A - 4s/4p - 1A - Finish
L3	Start - 1 - 4s/4p - 1 - 4s/4p - 1 - Finish
LE3	Start - 1A - 4s/4p - 1A - 4s/4p - 1A - Finish

LS



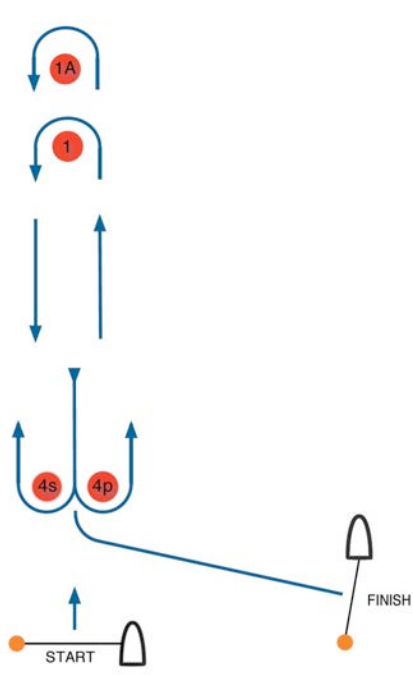
Signal	Mark rounding order
LS2	Start - 1 - 4s/4p - 1 - 4p - S1 - S2 - S3 - Finish
LES2	Start - 1A - 4s/4p - 1A - 4p - S1 - S2 - S3 - Finish
LS3	Start - 1 - 4s/4p - 1 - 4s/4p - 1 - 4p - S1 - S2 - S3 - Finish
LES3	Start - 1A - 4s/4p - 1A - 4s/4p - 1A - 4p - S1 - S2 - S3 - Finish

LG



Signal	Mark rounding order
LG2	Start - 1 - 4s/4p - 1 - 4s - Finish
LEG2	Start - 1A - 4s/4p - 1A - 4s - Finish
LG3	Start - 1 - 4s/4p - 1 - 4s/4p - 1 - 4s - Finish
LEG3	Start - 1A - 4s/4p - 1A - 4s/4p - 1A - 4s - Finish

LR



Signal	Mark rounding order
LR2	Start - 1 - 4s/4p - 1 - 4p - Finish
LER2	Start - 1A - 4s/4p - 1A - 4p - Finish
LR3	Start - 1 - 4s/4p - 1 - 4s/4p - 1 - 4p - Finish
LER3	Start - 1A - 4s/4p - 1A - 4s/4p - 1A - 4p - Finish

ADDENDUM B2 – COURSES FOR REACHING STARTS

RM

Signal	Mark rounding/passing order. P – to Port, S – to Starboard
RM1	Start – 1P – 2S – 1S – 3S – 1P – Finish
RM2	Start – 1P – 2S – 1S – 3S – 1P – 2S – 1S – 3S – 1P – Finish
	STARTING SYSTEM 2

RT

Signal	Mark rounding/passing order. P – to Port, S – to Starboard
RT1	Start – 1P – 2S/2P – 1P – 2P – Finish
RT2	Start – 1P – 2S/2P – 1P – 2S/2P – 1P – 2P – Finish
	STARTING SYSTEM 2

SL

Signal	Mark rounding/passing order. P – to Port, S – to Starboard
SL1	Start – 1P – 2S – 3P – Finish
SL2	Start – 1P – 2S – 3P – 4P – SP – 1P – 2S – 3P – Finish
	STARTING SYSTEM 2

SB

Signal	Mark rounding/passing order. P – to Port, S – to Starboard
SB1	Start – 1P – 2S – 3P – Finish
SB2	Start – 1P – 2S – 3P – 4P – SP – 1P – 2S – 3P – Finish
	STARTING SYSTEM 2

ADDENDUM C – SUPPORT BOAT REGULATIONS

1. GENERAL

- 1.1 This Support Boat Regulations (SBR) shall apply from 1000 on Saturday May 6th until 1900 on Saturday May 13th.
- 1.2 For the purposes of these regulations, a support boat includes any boat that is under the control or direction of a person who is or may provide physical or advisory support to an athlete, including the gathering of data that may be used at a later time.
- 1.3 The Organizing Authority may inspect boats at any time to ensure that they comply with these regulations, and the person responsible for the boat shall facilitate such inspection.
- 1.4 An alleged breach of any of these regulations may be referred to the International Jury for a hearing. As a result of the hearing, the International Jury may instruct the Organizing Authority to withdraw accreditation and access rights from the offending party, with or without the option of substitution, either for a specified period or for the remainder of the competition.
- 1.5 The Organizing Authority may change these regulations at any time. Any changes will be posted on the Official Notice Board.
- 1.6 Support boats and designated drivers shall be registered at the Regatta Office either before leaving the venue by water for the first time or by 18:00 on the day before the first race of a competitor that it is supporting, whichever is earlier.
- 1.7 Each boat shall be insured with valid third-party liability insurance with a minimum coverage of € 1,500,000 euro (or equivalent) per incident.
- 1.8 Only the registered person may be a designated driver.
- 1.9 The person registering the support boat shall sign to confirm that:
 - 1.9.1 he / she holds a valid insurance certificate showing proof of third-party liability coverage as required by 1.7;
 - 1.9.2 the designated driver has a motorboat driving license recognized by a national authority appropriate to that boat;
 - 1.9.3 anyone who will be using a radio has an appropriate radio operation license recognized by a national authority.
- 1.10 Support boats shall be marked as follows:
 - 1.10.1 The three-letter NOC code shall be clearly displayed on both sides of the boat in strongly contrasting colours at all times while afloat;
 - 1.10.2 The minimum height for the letters shall be 200mm. The letters will not be provided by the Organizing Authority.

2. SAILING VENUE

- 2.1. Support boats shall use the designated slipway/area for launching. Once launched, trailers shall be moved immediately to the trailer park or as otherwise directed by the Organizing Authority.
- 2.2. Only support boats that will be registered will be allowed into the sailing venue.

- 2.3. When not in use, support boats shall be appropriately berthed at the sailing venue in the allocated areas for support boats for the entire time that these SBR apply.

3. SAFETY

- 3.1. Support boats shall carry on board:

- 3.1.1. Life jackets / buoyancy aid for all passengers and the driver (it is recommended that they are worn at all times when afloat);
- 3.1.2. First-aid kit;
- 3.1.3. VHF radio;
- 3.1.4. Device for making a sound signal;
- 3.1.5. Compass;
- 3.1.6. Adequate anchor and tackle for conditions and depth;
- 3.1.7. Tow rope (minimum 15m long and 10mm thick);
- 3.1.8. Operational engine kill cord (also known as a safety lanyard or automatic engine immobilizer);
- 3.1.9. Knife.

- 3.2. It is strongly recommended that the kill cord be used at all times when the engine is running.

- 3.3. Team leaders are responsible for overseeing the safety of their support boats on the water, including knowledge of who is afloat and ensuring their safe return to the venue.

- 3.4. At all times, the registered driver(s) of a support boat shall comply with directions given by a Race Official. In particular, this includes assisting in rescue operations when requested to do so.

4. GENERAL RESTRICTIONS

- 4.1. The registered driver(s) of a support boat will be responsible for the control of the boat at all times and will be held responsible for any inappropriate behaviour, dangerous actions or improper practices, or actions affecting the fairness or safety of competition.

- 4.2. Support boats shall not leave any device, piece of equipment, buoy, marker or similar item permanently in the water. Temporary use of floating objects is allowed for current measurement. These objects shall be removed as soon as the measurement has been taken.

- 4.3. Support boats should take particular care to minimize their wash when transiting the course areas.

5. SUPPORT BOAT ZONE

- 5.1. Support Boats shall not be positioned:

- 5.1.1. Closer than 75 meters of any board racing;
- 5.1.2. Within 75 meters of the starting line and marks from the time of the preparatory signal until all boards have left the starting area, or the race committee signals a postponement, general recall or abandonment;
- 5.1.3. Between any board racing and the next mark of the course;
- 5.1.4. Between the inner and outer trapezoid courses when boards are racing on both courses;
- 5.1.5. Within 75 meters of any mark of the course while boards are in the vicinity of that mark;
- 5.1.6. Within 75 meters of the finishing line and marks while boards are finishing.

- 5.2. In addition, support boats that are motoring above 5 knots shall remain at least 150 meters from any board racing.