

2015 RS:X EUROPEAN WINDSURFING CHAMPIONSHIPS & EUROPEAN WINDSURFING OPEN TROPHY

including the 2015 Palermo RS:X U21 Windsurfing Championships
and

2015 RS:X YOUTH EUROPEAN WINDSURFING CHAMPIONSHIPS & YOUTH EUROPEAN WINDSURFING OPEN TROPHY

including the 2015 Palermo RS:X U17 Windsurfing Championships

June 20th - 27th 2015 Palermo, Mondello, Sicily, Italy



SAILING INSTRUCTIONS

In these sailing instructions Division A & B sailors [Class Rule C.2.3 a)] entered in the 2015 RS:X European Windsurfing Championships & Open Trophy and the 2015 RS:X U21 European Windsurfing Championships are referred to as 'Senior(s)'; Division C sailors [Class Rule C.2.3 (b)(i)] entered in the 2015 RS:X Youth European Windsurfing Championships & Open Trophy and the 2015 RS:X U17 European Windsurfing Championships are referred to as 'Youth(s)'. Where there is no reference to either 'Senior(s)' or 'Youth(s)' the rules below refer to all Divisions

[DP] denotes a rule for which the penalty is at the discretion of the International Jury and may be less than disqualification.

[NP] denotes that a breach of this rule will not be grounds for a protest by a board.

[SP] denotes a rule for which a standard penalty may be applied by the race committee without a hearing"

1. RULES

- 1.1 The regatta will be governed by the rules as defined in The Racing Rules of Sailing (RRS).
- 1.2 No National Authority prescriptions will apply.
- 1.3 If there is a conflict between the Notice of Race and these Sailing Instructions the Sailing Instructions will take precedence. This changes RRS 63.7.
- 1.4 If there is a conflict between languages the English text will take precedence.
- 1.5 Decisions on Measurement Protests: RRS 64.3(a) shall not apply.
- 1.6 Identification on Sails: a '-' may be applied between the national letters and sail number. This changes RRS Appendix B9.
- 1.7 For Youths only, the following Class rules shall be deleted: C.6.3(j), C.7.1(d) and C.7.2(g).
- 1.8 For the Medal Race, the Sailing Instructions of Addendum Q take precedence over any conflicting instructions.

2. [DP] [NP] ADDITIONAL IDENTIFICATION

- 2.1 Competitors shall wear lycras of the same colour as the fleet in which they are racing that

day (see SI 9 – Class Flags & Fleet Colours).

- 2.2 For the first day of single fleets and the duration of Qualification Series for split fleets the top 3 seeds (based on their ranking in the 2014 World Championships or Youth World Championships), shall wear lycras as follows: 1st - yellow, 2nd - blue and 3rd - red. From the second day for single fleets and beginning of Final Series for split fleets the 1st, 2nd and 3rd placed competitors shall wear, for that day only, a yellow, blue or red lycra respectively.
- 2.3 The Organising Authority may require a self-adhesive disc to be applied of the same colour on both sides of their sail next to, and at the same level as, the sail number.
- 2.4 The lycras and the discs will be supplied by the Organising Authority.
- 2.5 Lycra shall be worn outside other clothing while racing. Competitors shall not deliberately cut or tear them.

3. CAMERAS AND ELECTRONIC EQUIPMENT

- 3.1 **[DP] [NP]** Competitors may be required to carry on their boards cameras, sound equipment or positioning equipment as specified by the Organising Authority. Those competitors competing in the same race that are not issued with such equipment shall carry an equivalent weight in the same position as issued by the Organising Authority.
- 3.2 **[NP]** Personal Cameras and their attachments may be carried provided that they do not affect the function or use of any existing part of the board or associated equipment. In accordance with RRS 87, this changes Class Rule C.4.1.
 - 3.2.1 Such recordings shall not be used as evidence in a request for redress or protest. This changes RRS 63.6.
 - 3.2.2 Any footage or recording is to be made available to the RS:X Class Association upon request.
- 3.3 The use of motion pictures by the LOA and the RS:X Class Association as referred to in Notice of Race 21.1 also relates to video taken by competitors.

4. NOTICES TO COMPETITORS

- 4.1 Notices to competitors will be posted on the Official Notice Board.

5. CHANGES TO SAILING INSTRUCTIONS

- 5.1 Any change to the Sailing Instructions is subject to the approval of the Class Course Representative and will be posted no later than two hours before the warning signal of the race on the day it will take effect, except that any change to the schedule of races will be posted by 2000 on the day before it will take effect.

6. SIGNALS MADE ASHORE

- 6.1 Signals made ashore will be displayed at the Official Flagpole(s).
- 6.2 A change to the intended race area (SI 10.2) will be signalled by the display of race area flags (SI 10.1) over the relevant class flags no later than 60 minutes before the removal of AP ashore
- 6.3 **[DP] [NP]** When Flag AP is displayed ashore competitors shall not go afloat. '1 minute' is replaced with 'not less than 30 minutes' in the race signal AP.
- 6.4 **[DP] [NP]** When Flag Y is displayed ashore, RRS 40 applies at all times while afloat. This changes the Part 4 preamble. When Flag Y is subsequently lowered on the Race Committee signal boat the requirement to wear personal flotation devices is removed.
- 6.5 **[DP] [NP]** On the last day of racing and if Medal Races are scheduled, boards shall not launch until the display of:

Race	Signal
Men's Medal Race	Flag M over Men's Gold Fleet Class Flag
Women's Medal Race	Flag M over Women's Gold Fleet Class Flag
Final Race	Flag D alone

7. FORMAT OF RACING

- 7.1 The regatta consists of an Opening Series and a Medal Race. If the event is split into fleets, the Opening Series will be divided into a Qualifying Series and a Final Series.
- 7.2 Senior Men and Senior Women will race separately on one race area; Youth Men and Youth Women will race separately on a second race area.
- 7.3 Any other division(s) referred to in the appropriate Notice of Race will race in the fleets of the appropriate 'Open Trophy'. When racing is to be in more than one fleet, the number of fleets and the assignment of competitors to fleets are at the discretion of the Class Course Representative. This is not ground for redress. This changes RRS 62.1(a).
- 7.4 The number of fleets is likely to be based on the number of entries as follows:

Entries	Fleets
< 50	1
51-60	1 or 2
> 60	2

7.5 Qualifying Series

- 7.5.1 Boards will be assigned to Yellow and Blue fleets of, as nearly as possible, equal size and ability according to their ranking in the 2014 World Championships, then their ranking in the 2014 European Championships and finally in random order. Those assignments will be posted by 2100 on the day before the first scheduled race.
- 7.5.2 Boards will be reassigned to fleets after each day of racing, except if on the first day of racing fewer than two races are completed by both fleets. If all fleets have completed the same number of races, boards will be reassigned on the basis of their ranks in the series. If all fleets have not completed the same number of races, the series score for reassignment will be calculated for those races, numbered in order of completion, completed by both fleets. Reassignments will be made as follows:

Rank in Series	Fleet Assignment
First	Yellow
Second	Blue
Third	Blue
Fourth	Yellow
Fifth	Yellow
Sixth	Blue

and so on. If two or more boards have a same rank, they will be entered in the left column in the order of fleets in SI 7.6.1.

- 7.5.3 In the case of an odd number of competitors, the last competitor to be assigned will race in Yellow fleet.
- 7.5.4 Fleet assignments will be based on the ranking available at 2100 that day regardless of protests or request for redress not yet decided.
- 7.5.5 If both fleets have not completed the same number of races by the end of a day, the fleets with fewer races will continue racing the following day until all fleets have completed the same number of races. All boards will thereafter race in the new fleets.

7.6 Final Series

- 7.6.1 Boards will be assigned to the Gold and Silver fleets on the basis of their ranks in the Qualifying Series (discards applied) but with no ties broken.
- 7.6.2 The fleet lists shall be posted at least 2 hours before the first scheduled warning signal of the first race of the Final Series.
- 7.6.3 The top 50% of sailors will race in Gold fleet, with the rest in Silver fleet, but at the break point, any competitors with the same score will race in Gold fleet. In the case of an odd number of competitors Gold fleet shall be larger than Silver fleet.
- 7.6.4 In Final Series there will be the same number (and approximate size) of fleets as in Qualifying Series
- 7.6.5 Any recalculation of Qualifying Series overall rankings after competitors have been assigned to Final Series fleets will not affect the assignments except that a redress decision may promote a competitor to a higher fleet.

7.7 Medal Race

- 7.7.1 At 2100 on the penultimate day the top ten competitors in the overall rankings of Opening Series will be assigned to sail in the Medal Race. The International Jury may extend this time limit.

8. SCHEDULE

8.1 The event:

- 8.1.1 Commences on completion of registration, once the requirements of entry as defined in the Notice of Race (3. Eligibility and Entry Regulation) and the requirements of equipment registration (NoR 7. Equipment and Equipment Checks; SI 23.1; Pre-event equipment form) have been met.
- 8.1.2 Ends on a sailor's last day of racing when the notice as defined in SI 19.3 is posted (within 30 minutes of the Protest Time limit) for those competitors not involved in any hearings. For those involved in any hearing, the event ends once this process has been completed.

8.2 Event Schedule:

Date	Day	Times	Event
June 20 th	Saturday	1000-1500 hrs	Registration & Equipment Check
June 21 st	Sunday	0900-1200 hrs 1300 hrs 1700 hrs 2000 hrs	Registration & Equipment Check Practice Race Coaches Meeting Opening Ceremony
June 22 nd	Monday	1100 hrs	Races
June 23 rd	Tuesday	1100 hrs	Races
June 24 th	Wednesday		Reserve Day
June 25 th	Thursday	1100 hrs	Races
June 26 th	Friday	1100 hrs	Races
June 27 th	Saturday	1100 hrs 1700 hrs 2000 hrs	Races & Medal Races Last possible warning signal Prize Giving & Closing Ceremony
June 28 th	Sunday		Departure

This changes NOR 6.5.

- 8.3 There will be a maximum of 13 races in total (including a Medal Race) with a maximum of 3 races per day irrespective of planning conditions. If a Medal Race is scheduled on Saturday 27th June there will be only one race scheduled that day.
- 8.4 The Reserve Day may be used for racing but only to achieve completion of 4 races for each

fleet. When the reserve day is used 3 races will be scheduled.

- 8.5 Qualifying Series will consist of a maximum of 6 races and a minimum of 4 races, sailed for a minimum of 2 days or as long as necessary for both fleets to complete 4 races.
- 8.6 Final Series will run for a maximum of 3 days with a maximum of 7 races (6 races for those assigned to the Medal Races).
- 8.7 One Medal Race is scheduled for Senior Men, Senior Women, Youth Men and Youth Women.
- 8.8 On the Last Day
 - 8.8.1 if fewer than 4 races have been completed for split fleets, then the last day continues as Qualifying Series.
 - 8.8.2 if fewer than 2 Final Series races for split fleets and fewer than 6 races for single fleets have been completed then the last day will continue as Final/Opening Series.
 - 8.8.3 if 2 or more Final Series races for split fleets and 6 or more Opening Series races for single fleets have been completed then competitors will race in the Medal Race or, for those not assigned to the Medal Race, an additional Final/Opening Series race.
- 8.9 The scheduled time of the warning signal for the first race each day is 1100.
- 8.10 The warning signal for each succeeding race will be made as soon as practicable after the finish of the previous race.
- 8.11 To alert competitors that a race or sequence of races will begin soon, the orange starting line flag will be displayed (with one sound) for at least five minutes before a warning signal is made.
- 8.12 The warning signal for the last race of each day shall not be made within 60 minutes of the official sunset time unless after a postponement during a start sequence or a general recall.
- 8.13 On the last day of the regatta no warning signal will be made after 1700 unless after a postponement during a start sequence or a general recall.

9. FLEETS, CLASS FLAGS & COLOURS

- 9.1 The description of Class flags and lycras will be posted on the official notice board.

10. RACING AREAS

- 10.1 Appendix 1 shows the Racing areas. A white flag with the letter of the race area in black designates that race area.
- 10.2 The intended assignments of either Seniors or Youths to a specific race area will be posted on the Official Notice Board.
- 10.3 The racing area is defined as an area extending 75m beyond the entire course in which a competitor would normally sail while racing.
- 10.4 **[DP]** Boards not racing shall avoid the racing area.

11. THE COURSES

- 11.1 Appendix 2 shows the courses, including the course signals, approximate angles between legs, the order in which marks are to be passed, and the side on which each mark is to be left.
- 11.2 At the discretion of the Class Course Representative either a Trapezoidal Course or Windward/Leeward Course will be set for Opening Series races. The Medal Race will be sailed on a Windward/Leeward Course.
- 11.3 For each course, a 'Slalom End' with 3 marks may be set.

11.4 A gate at mark 1 may be set for Seniors.

11.5 If a gate at Mark 1, Mark 3 or Mark 4 is either set or replaced by a single mark, it shall be left to port.

12. MARKS

12.1 Marks 1, 2, 3, 4; all slalom marks; and change marks will all be inflatable buoys.

12.2 The starting marks will be a Race Committee Signal Boat at the starboard end of the start line and a Race Committee Pin-end Boat.

12.3 The finishing marks will be a Race Committee Boat and a laid mark.

12.4 The colour and shape of marks inflatable and laid marks will be posted on the official notice board.

12.5 Any mark which is a boat may not be anchored but held in place by the use of an engine(s). This will not be grounds for redress. This changes RRS 62.1(a).

13. THE START

13.1 Races will be started by using RRS 26 with the warning signal made 5 minutes before the starting signal.

13.2 The starting line will be between the staffs displaying orange flags on the starting marks.

13.3 **[DP]** Competitors whose warning signal has not been made shall avoid the starting area during the starting sequence for other races.

13.4 A competitor starting later than 4 minutes after her starting signal will be scored Did Not Start (DNS) without a hearing. This changes RRS A4 and A5.

13.5 If a competitor fails to start or breaks RRS 30.3, the Race Committee will display her sail number on the Race Committee Signal Boat before the first competitor has finished that race. Failure to display the sail number(s) will not be grounds for redress. This changes RRS 62.1(a).

14. CHANGE OF THE NEXT LEG OF THE COURSE

14.1 To change the next leg of the course, the race committee will lay a new mark (or move the finishing line) and remove the original mark as soon as practicable. When in a subsequent change a new mark is replaced, it will be replaced by an original mark.

14.2 If changing the next leg of a course results in the Mark 1 gate changing position, it will be replaced with a single mark to be left to port. This changes RRS 33.

15. SHORTENING COURSE

15.1 During the races, the Race Committee may shorten the course according to RRS 32. In addition, if Flag W is displayed (with multiple sound signals) at mark 3 on a Trapezoid Course or mark 4 on a Windward/Leeward Course, competitors shall, having sailed through the gate, proceed immediately to the finishing line, sailing through the slalom if one is present.

16. THE FINISH

16.1 The finishing line will be between the staff displaying a blue flag on the finishing mark and the course side of the laid mark (or the flag on this mark if present) at the other end of the finish line.

17. PENALTY SYSTEM

17.1 Penalties for breaches of rules in the Sailing Instructions marked **[SP]** will be 5 points for each infringement. The penalty is applied to each race in which the instruction was infringed

except that for a breach of SI 21.2:

- 17.1.1 Failure to Check-Out will result in 5 points penalty for the next race completed even if no race is completed on the day of the infringement.
- 17.1.2 Failure to Check-In will result in 5 points penalty for the last race completed even if no race is completed on the day of the infringement.
- 17.1.3 Only one 5 point penalty for infringements of SI 17.1.1 and SI 17.1.2 will be applied to any one race.

17.2 If penalties referred to in SI 17.1 are applied by the Race Committee:

- 17.2.1 they will be applied without a hearing. This changes RRS 63.1.
- 17.2.2 a competitor shall not be scored worse than a disqualified competitor.
- 17.2.3 they will be posted on the Official Notice Board within one hour of the protest time limit.

18. TIME LIMITS AND TARGET TIMES

18.1 Time limits and target times are in minutes and as follows:

	<i>Time Limit</i>	<i>Mark 1 Time Limit</i>	<i>Finish Window</i>	<i>Target Time</i>
All Races	40	15	15	20-25

18.2 Competitors failing to finish within the time stated in the Finish Window, after the first competitor in that group sails the course and finishes, will be scored Did Not Finish (DNF). This changes RRS 35, A4 and A5.

19. PROTESTS AND REQUESTS FOR REDRESS

- 19.1 Protest forms are available at the Race Office. Protests and requests for redress or reopening shall be delivered there within the protest time limit.
- 19.2 For each fleet, the protest time limit is 60 minutes after the last competitor has finished the last race of the day for that fleet or when AP over A (or N over A) is displayed.
- 19.3 Notices will be posted within 30 minutes of the protest time limit to inform competitors of hearings in which they are parties or named as witnesses.
- 19.4 Hearings will be held in the Protest Room.
- 19.5 Notices of protests by the Race Committee, Championship Chief Measurer or International Jury will be posted within the protest time limit to inform competitors under RRS 61.1(b).
- 19.6 Breaches of Class Rules C.1.2, C9.2 and rules in the Sailing Instructions marked **[NP]** will not be grounds for a protest by a competitor. This changes RRS 60.1(a). Penalties for breaches marked **[DP]** are at the discretion of the protest committee and may be less than disqualification, if the protest committee so decides.
- 19.7 On the last scheduled day of a competitor's Series (Qualification or Final/Opening), a request for reopening a hearing shall be delivered within the protest time limit if the requesting party was informed of the decision on the previous day, or no later than 30 minutes after the requesting party was informed of the decision on that day. This changes RRS 66.
- 19.8 On the last scheduled day of a competitor's Series (Qualification or Final/Opening), request for redress from a International Jury decision shall be delivered no later than 30 minutes after the decision was posted. This changes RRS 62.2.
- 19.9 Decisions of the International Jury will be final as provided in RRS 70.5.

20. SCORING

20.1 A minimum of 1 race is required for a valid Championship.

20.2 The scoring will be the Low Points Scoring System in accordance with RRS A4 and B8.

20.3 Scores for the:

20.3.1 2015 RS:X European Windsurfing Championships and the 2015 Palermo RS:X U21 Windsurfing Championships will be extracted from the overall 'European Open Trophy Results' without recalculation.

20.3.2 2015 RS:X Youth European Windsurfing Championships and the 2015 Palermo RS:X U17 Windsurfing Championships will be extracted from the overall 'Youth European Open Trophy Results' without recalculation.

20.4 A competitor's series score will be the total of her race scores excluding her worst score(s) as follows:

20.4.1 When racing in a single fleet:

Races	Discards	Comments
1-4	0	No discard
5-11	1	One worst score discarded
12 or more	2	Two worst scores discarded

20.4.2 When racing in a split fleet:

Races	Discards	Comments
1-4	0	No discard
5-11	1	One worst score discarded
12 or more	2	The worst score in Qualifying Series and the worst score in Final Series

20.5 To request correction of an alleged error in posted results, a competitor may complete a Scoring Enquiry Form available at the Race Office.

20.6 The scoring abbreviation for a penalty imposed under SI 17.1 will be SCP.

20.7 For Qualification Series, scores are based on the number of competitors assigned to the largest fleet in that Series. This changes RRS A4.2.

20.8 For those competitors not assigned to the Medal Race and scheduled to an additional Opening Series race as detailed in SI 8.8.3, the first finisher will score 1 point, 2nd 2 pts. and so on.

20.9 If no race in Final Series is completed, the overall ranking in Qualification Series will be established and this shall count as the official result.

20.10 If no Medal Race is completed, the rankings in Opening Series will be established and this shall count as the official result.

20.11 When racing in multiple fleets, competitors assigned to Gold fleet will be ranked higher in the regatta than competitors assigned to Silver fleet and so forth.

20.12 Competitors assigned to compete in the Medal Races will be ranked highest in the regatta except for a competitor disqualified from a Medal Race under RRS 5 or RRS 69.

20.13 Medal Races:

20.13.1 The Medal Races scores shall not be excluded.

20.13.2 The Medal Races score double points (1st = 2 points, 2nd = 4 points, etc), and the scores are based on the number of competitors assigned to compete in that race. This changes RRS A4.2.

20.13.3 For competitors assigned to compete in the Medal Races, ties in the regatta score are broken by the Medal Races scores. This changes RRS A8.

20.13.4 A competitor assigned to compete in the Medal Race shall make a genuine effort to start, sail the course and finish. The penalty for a breach of this instruction will be ranking the competitor tenth in the regatta. If there are two such competitors, they will be ranked ninth and tenth, in order of their Series ranks, and so on. This

changes RRS A4 and A5.

21. [DP] [NP] SAFETY REGULATIONS

- 21.1 [SP] In accordance with Class Rules C.1.2 competitors shall carry a whistle and a 5m tow rope.
- 21.2 [SP] Check-Out; Check-In:
- 21.2.1 When going out to race each competitor intending to race shall personally sign against their name and / or sail number.
 - 21.2.2 On returning ashore, even after the display of AP/H, AP/A, N/H or N/A when no race has been completed after launching, each competitor shall personally sign, against their name and / or sail number, within the protest time limit or within 60 minutes of the display of AP/H, AP/A, N/H or N/A.
 - 21.2.3 Check-Out Lists and Check-In Lists will be available at the Race Office.
- 21.3 A competitor that retires from a race shall notify the Race Committee as soon as possible and shall complete a Retirement Declaration Form, available from the Race Office, within the protest time limit.
- 21.4 Competitors not racing for any of the racing days shall inform the Race Office.
- 21.5 When flag V is displayed with repetitive sounds, coach and other support boats shall monitor the Race Committee VHF channel and assist in search and rescue operations.

22. [DP] REPLACEMENT OF EQUIPMENT

- 22.1 Substitution of damaged or lost equipment will not be allowed unless authorised by the Championship Chief Measurer.
- 22.2 **Replacement ashore:** Requests for substitution of damaged or lost equipment shall be made in writing on a form available at the Race Office and delivered there for consideration. Any request shall be made at the first reasonable opportunity.
- 22.3 **Replacement afloat:** When an item of equipment is damaged or lost shortly before a race and is replaced, the competitor shall notify the Race Committee before the warning signal. As soon as practicable after coming ashore and within the protest time limit, the competitor shall comply with SI 22.2 and the replaced item shall be presented to the Championship Chief Measurer.

23. [DP] EQUIPMENT AND MEASUREMENT CHECKS

- 23.1 Only marked equipment shall be used at this event. 'Fast-check' stickers and instructions on placement will be issued to each competitor at registration. Registration and marking shall be completed as follows:
- 23.1.1 Competitors shall apply the issued stickers, in compliance with the instructions, to one set of equipment to be used for the entire event.
 - 23.1.2 Fins shall be presented to the Championship Chief Measurer for stamping.
- 23.2 The Championship Chief Measurer will, as far as possible, answer competitors' questions relating to measurement and Class rules.
- 23.3 Stamped/marked equipment shall not be removed from the venue, the racing area and the waters leading to them, without prior written permission of the Championship Chief Measurer.
- 23.3.1 The venue will be defined and that definition placed on the Official Notice Board.
- 23.4 Equipment may be inspected at any time for compliance with the class rules and the sailing instructions according to the following procedures:
- 23.4.1 A competitor may be instructed by the Race Committee or Championship Chief

Measurer, either ashore or on the water, to proceed immediately to the Inspection Area for inspection.

23.4.2 Until permission is given by the Championship Chief Measurer, a competitor once instructed to proceed for inspection, shall have no unauthorised contact with any support personnel, no person shall join or leave the board, no equipment or other item shall be taken on or off that board and the board shall not leave the Inspection Area.

23.5 The Championship Chief Measurer may protest a competitor for an alleged breach of the class rules or sailing instructions. This changes RRS 60 and 78.3.

24. [DP] [NP] ADVERTISING

24.1 Each competitor shall place stickers issued by the Organising Authority, back to back on the sail immediately below batten 5 and as close to the leach as possible but without overlapping the sail corner reinforcement. Competitors shall not cut or adapt the stickers in any way.

25. LOCATIONS OF IMPORTANCE

25.1 The Race Office is located in front of the Club Albaria.

25.2 The Official Notice Board is located in front of the Race Office.

25.3 The locations of the Official Flagpole, the Beach Desk, the Inspection Area and the Jury Room will be posted on the Official Notice Board.

26. OFFICIAL BOATS

26.1 Official boats will be marked as follows:

Boat	Flag
Jury and Umpires	Yellow flag with black letter J
Race Committee	White flag with black letter S
Measurer	Yellow flag with black letter M
Rescue	White flag with red letter S
Press, Media	White flag with black letters PRESS

26.2 Actions by the official boats shall not be grounds for redress by a competitor. This changes RRS 62.1(a).

27. [DP] SUPPORT BOATS

27.1 Team leaders, coaches and other support personnel shall comply with the Coaches' Code of Conduct.

27.2 Infringements of the Coaches' Code of Conduct will be subject to action by the Race Committee or by the International Jury, which may result in preventing a support boat from going afloat.

28. [DP] TRASH DISPOSAL

28.1 Trash may be placed aboard support and Race Committee boats.

29. [DP] RADIO COMMUNICATION

29.1 While on the water, a competitor shall not carry equipment capable of making radio transmissions or receiving radio communications, except for equipment provided by the Organising Authority. This restriction also applies to mobile telephones.

29.2 For purposes of safety, coaches may monitor the Race Committee working channel, but cannot transmit on this channel except in the case of an emergency.

30. PRIZES

30.1 Prizes will be awarded according to the Notice of Race.

31. DISCLAIMER OF LIABILITY

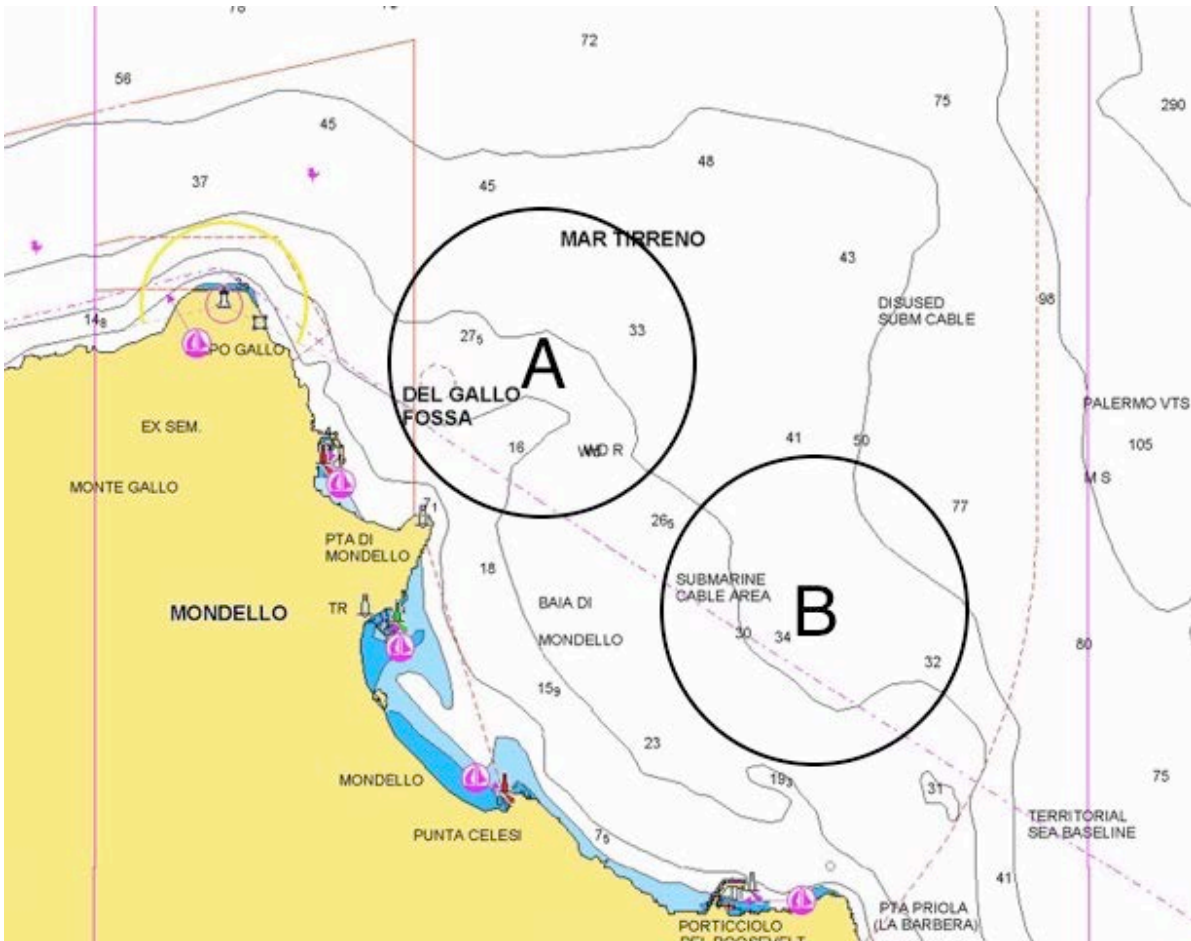
31.1 Competitors participate in the regatta entirely at their own risk. See RRS 4, Decision to Race. The Organising Authority will not accept any liability for material damage or personal injury or death sustained in conjunction with or prior to, during, or after the regatta.

32. INSURANCE

32.1 Each participating competitor shall be insured with valid third-party liability insurance with a minimum cover of €1,000,000 per event or the equivalent.

32.2 Coach and support boat drivers shall also have valid third-party liability insurance with a minimum cover of €1,500,000 per event or the equivalent.

APPENDIX 1 – CHART SHOWING RACING AREA



APPENDIX 2 – COURSES

OS

Signal	Mark Rounding Order
OS2	Start - 1 - 2 - 3s/3p - 2 - 3p - S1 - S2 - S3 - Finish
OES2	Start - 1A - 2A - 3s/3p - 2A - 3p - S1 - S2 - S3 - Finish
OS3	Start - 1 - 2 - 3s/3p - 2 - 3s/3p - 2 - 3p - S1 - S2 - S3 - Finish
OES3	Start - 1A - 2A - 3s/3p - 2A - 3s/3p - 2A - 3p - S1 - S2 - S3 - Finish

IS

Signal	Mark Rounding Order
IS2	Start - 1 - 4s/4p - 1 - 2 - 3p - S1 - S2 - S3 - Finish
IES2	Start - 1A - 4s/4p - 1A - 2A - 3p - S1 - S2 - S3 - Finish
IS3	Start - 1 - 4s/4p - 1 - 4s/4p - 1 - 2 - 3p - S1 - S2 - S3 - Finish
IES3	Start - 1A - 4s/4p - 1A - 4s/4p - 1A - 2A - 3p - S1 - S2 - S3 - Finish

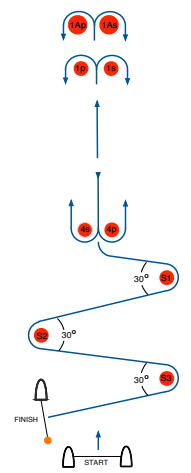
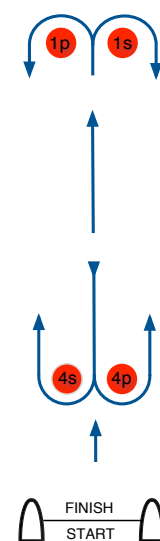
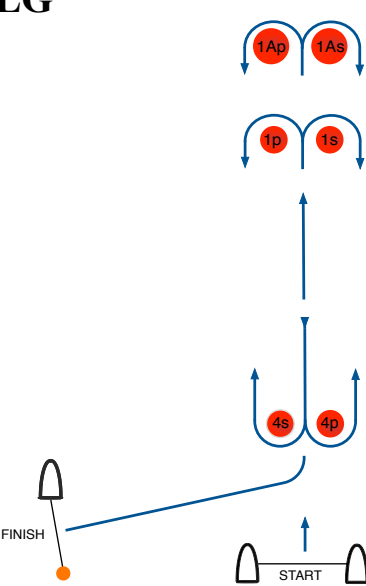
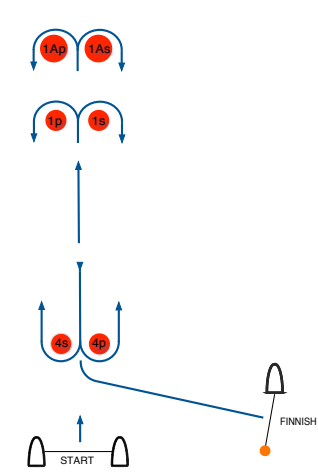
O

Signal	Mark Rounding Order
O2	Start - 1 - 2 - 3s/3p - 2 - 3p - Finish
OE2	Start - 1A - 2A - 3s/3p - 2A - 3p - Finish
O3	Start - 1 - 2 - 3s/3p - 2 - 3s/3p - 2 - 3p - Finish
OE3	Start - 1A - 2A - 3s/3p - 2A - 3s/3p - 2A - 3p - Finish

I

Signal	Mark Rounding Order
I2	Start - 1 - 4s/4p - 1 - 2 - 3p - Finish
IE2	Start - 1A - 4s/4p - 1A - 2A - 3p - Finish
I3	Start - 1 - 4s/4p - 1 - 4s/4p - 1 - 2 - 3p - Finish
IE3	Start - 1A - 4s/4p - 1A - 4s/4p - 1A - 2A - 3p - Finish

APPENDIX 2 - COURSES

<p>LS</p>  <table border="1"> <thead> <tr> <th>Signal</th> <th>Mark Rounding Order</th> </tr> </thead> <tbody> <tr> <td>LS2</td> <td>Start - 1p/1s - 4s/4p - 1p/1s - 4p - S1 - S2 - S3 - Finish</td> </tr> <tr> <td>LES2</td> <td>Start - 1Ap/1As - 4s/4p - 1Ap/1As - 4p - S1 - S2 - S3 - Finish</td> </tr> <tr> <td>LS3</td> <td>Start - 1p/1s - 4s/4p - 1p/1s - 4s/4p - 1p/1s - 4p - S1 - S2 - S3 - Finish</td> </tr> <tr> <td>LES3</td> <td>Start - 1Ap/1As - 4s/4p - 1Ap/1As - 4s/4p - 1Ap/1As - 4p - S1 - S2 - S3 - Finish</td> </tr> </tbody> </table>	Signal	Mark Rounding Order	LS2	Start - 1p/1s - 4s/4p - 1p/1s - 4p - S1 - S2 - S3 - Finish	LES2	Start - 1Ap/1As - 4s/4p - 1Ap/1As - 4p - S1 - S2 - S3 - Finish	LS3	Start - 1p/1s - 4s/4p - 1p/1s - 4s/4p - 1p/1s - 4p - S1 - S2 - S3 - Finish	LES3	Start - 1Ap/1As - 4s/4p - 1Ap/1As - 4s/4p - 1Ap/1As - 4p - S1 - S2 - S3 - Finish	<p>L</p>  <table border="1"> <thead> <tr> <th>Signal</th> <th>Mark Rounding Order</th> </tr> </thead> <tbody> <tr> <td>L2</td> <td>Start - 1p/1s - 4s/4p - 1p/1s - Finish</td> </tr> <tr> <td>L3</td> <td>Start - 1p/1s - 4s/4p - 1p/1s - 4s/4p - 1p/1s - Finish</td> </tr> </tbody> </table>	Signal	Mark Rounding Order	L2	Start - 1p/1s - 4s/4p - 1p/1s - Finish	L3	Start - 1p/1s - 4s/4p - 1p/1s - 4s/4p - 1p/1s - Finish				
Signal	Mark Rounding Order																				
LS2	Start - 1p/1s - 4s/4p - 1p/1s - 4p - S1 - S2 - S3 - Finish																				
LES2	Start - 1Ap/1As - 4s/4p - 1Ap/1As - 4p - S1 - S2 - S3 - Finish																				
LS3	Start - 1p/1s - 4s/4p - 1p/1s - 4s/4p - 1p/1s - 4p - S1 - S2 - S3 - Finish																				
LES3	Start - 1Ap/1As - 4s/4p - 1Ap/1As - 4s/4p - 1Ap/1As - 4p - S1 - S2 - S3 - Finish																				
Signal	Mark Rounding Order																				
L2	Start - 1p/1s - 4s/4p - 1p/1s - Finish																				
L3	Start - 1p/1s - 4s/4p - 1p/1s - 4s/4p - 1p/1s - Finish																				
<p>LG</p>  <table border="1"> <thead> <tr> <th>Signal</th> <th>Mark Rounding Order</th> </tr> </thead> <tbody> <tr> <td>LG2</td> <td>Start - 1p/1s - 4s/4p - 1p/1s - 4s - Finish</td> </tr> <tr> <td>LEG2</td> <td>Start - 1Ap/1As - 4s/4p - 1Ap/1As - 4s - Finish</td> </tr> <tr> <td>LG3</td> <td>Start - 1p/1s - 4s/4p - 1p/1s - 4s/4p - 1p/1s - 4s - Finish</td> </tr> <tr> <td>LEG3</td> <td>Start - 1Ap/1As - 4s/4p - 1Ap/1As - 4s/4p - 1Ap/1As - 4s - Finish</td> </tr> </tbody> </table>	Signal	Mark Rounding Order	LG2	Start - 1p/1s - 4s/4p - 1p/1s - 4s - Finish	LEG2	Start - 1Ap/1As - 4s/4p - 1Ap/1As - 4s - Finish	LG3	Start - 1p/1s - 4s/4p - 1p/1s - 4s/4p - 1p/1s - 4s - Finish	LEG3	Start - 1Ap/1As - 4s/4p - 1Ap/1As - 4s/4p - 1Ap/1As - 4s - Finish	<p>LR</p>  <table border="1"> <thead> <tr> <th>Signal</th> <th>Mark Rounding Order</th> </tr> </thead> <tbody> <tr> <td>LR2</td> <td>Start - 1p/1s - 4s/4p - 1p/1s - 4p - Finish</td> </tr> <tr> <td>LER2</td> <td>Start - 1Ap/1As - 4s/4p - 1Ap/1As - 4p - Finish</td> </tr> <tr> <td>LR3</td> <td>Start - 1p/1s - 4s/4p - 1p/1s - 4s/4p - 1p/1s - 4p - Finish</td> </tr> <tr> <td>LER3</td> <td>Start - 1Ap/1As - 4s/4p - 1Ap/1As - 4s/4p - 1Ap/1As - 4p - Finish</td> </tr> </tbody> </table>	Signal	Mark Rounding Order	LR2	Start - 1p/1s - 4s/4p - 1p/1s - 4p - Finish	LER2	Start - 1Ap/1As - 4s/4p - 1Ap/1As - 4p - Finish	LR3	Start - 1p/1s - 4s/4p - 1p/1s - 4s/4p - 1p/1s - 4p - Finish	LER3	Start - 1Ap/1As - 4s/4p - 1Ap/1As - 4s/4p - 1Ap/1As - 4p - Finish
Signal	Mark Rounding Order																				
LG2	Start - 1p/1s - 4s/4p - 1p/1s - 4s - Finish																				
LEG2	Start - 1Ap/1As - 4s/4p - 1Ap/1As - 4s - Finish																				
LG3	Start - 1p/1s - 4s/4p - 1p/1s - 4s/4p - 1p/1s - 4s - Finish																				
LEG3	Start - 1Ap/1As - 4s/4p - 1Ap/1As - 4s/4p - 1Ap/1As - 4s - Finish																				
Signal	Mark Rounding Order																				
LR2	Start - 1p/1s - 4s/4p - 1p/1s - 4p - Finish																				
LER2	Start - 1Ap/1As - 4s/4p - 1Ap/1As - 4p - Finish																				
LR3	Start - 1p/1s - 4s/4p - 1p/1s - 4s/4p - 1p/1s - 4p - Finish																				
LER3	Start - 1Ap/1As - 4s/4p - 1Ap/1As - 4s/4p - 1Ap/1As - 4p - Finish																				