

**2015 RS:X EUROPEAN WINDSURFING CHAMPIONSHIPS & EUROPEAN WINDSURFING OPEN TROPHY**  
*including the 2015 Palermo RS:X U21 Windsurfing Championships*  
 and  
**2015 RS:X YOUTH EUROPEAN WINDSURFING CHAMPIONSHIPS & YOUTH EUROPEAN WINDSURFING OPEN TROPHY**  
*including the 2015 Palermo RS:X U17 Windsurfing Championships*

June 20<sup>th</sup> - 27<sup>th</sup> 2015 Palermo, Mondello, Sicily, Italy

## NOTICE TO COMPETITORS

### Number 2

**1. AMMENDMENT TO SAILING INSTRUCTIONS #3**

1.1. Delete 2.1 and replace with:

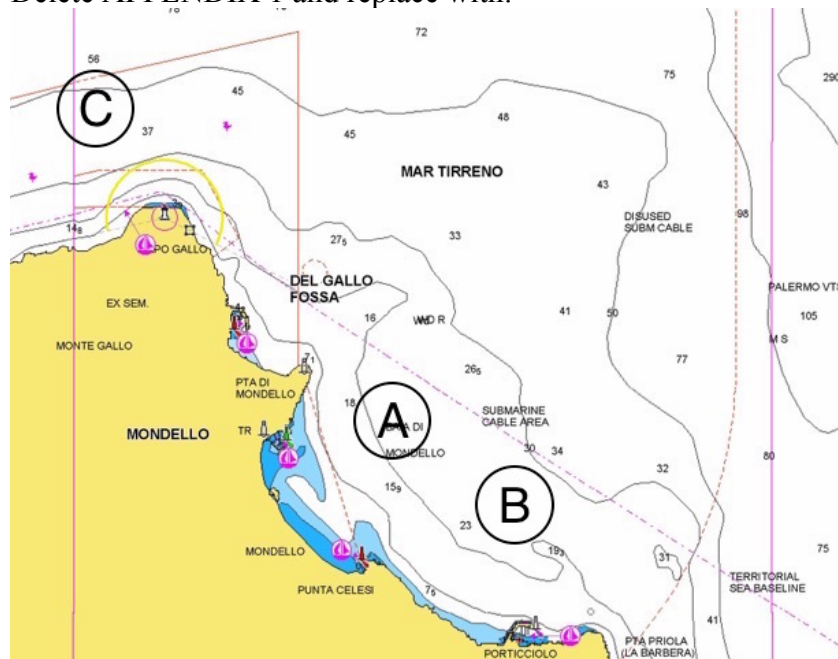
Competitors **may** wear lycras of the same colour as the fleet in which they are racing that day (see SI 9 – Class Flags & Fleet Colours).

1.2. Add instruction 2.6:

If supplied by the Organizing Authority, fleets shall attach a ribbon to the top batten of their sail. Information about the ribbons will be posted on the Official Notice Board no later than 90 minutes before the first scheduled start the day or in case flag AP is displayed ashore, 60 minutes before the removal of flag AP. The ribbons will be supplied at the Beach Desk.

**2. AMMENDMENT TO SAILING INSTRUCTIONS #4**

2.1. Delete APPENDIX 1 and replace with:



**3. The intended times of warning signals for Monday 21th October are as follows:**

3.1. Senior

Men Yellow Fleet	1100
Men Blue Fleet	Not before 1120
Women Yellow Fleet	Not before 1430
Women Blue Fleet	Not before 1450

3.2. Youth

Men Yellow Fleet	1100
Men Blue Fleet	Not before 1120
Women Yellow Fleet	Not before 1430

**4. Class Flags and Lycra Vest colours (Instruction 9.1) are as follows:**

4.1. Senior

Fleet	Class Flag	Lycra Vest
Men Yellow Fleet	White	White
Men Blue Fleet	Navy Blue	Navy Blue
Women Yellow Fleet	Orange	Orange
Women Blue Fleet	Yellow	-

4.2. Youth

Fleet	Class Flag	Lycra Vest
Men Yellow Fleet	Grey	Grey
Men Blue Fleet	Light Blue	Light Blue
Women	Pink	Pink

**5. The colour and shape of the inflatable marks are as follows (Instruction 12.4):**

5.1. Senior

Mark 1, 2	Orange Tetrahedral
Marks 3, 4	Yellow Cylindrical
Marks S1, S2, S3	Orange Cylindrical
Replacement marks	Yellow Cylindrical
Finish ODM	Yellow Cylindrical Small

5.2. Youth

Marks 1, 2	Large Yellow
Marks 3, 4	Orange Tetrahedral
Marks S1, S2, S3	Orange Cylindrical
Replacement marks	Orange Tetrahedral
Finish ODM	Yellow Cylindrical Small

**6. Location of the Beach Desk**

The location of the Beach Desk (Sign-in / Sign-out) will be in front of the Race Office.

**Class Race Directors**

Rene Kalff (Seniors)

Ewa Jodlowska (Juniors)

Time

Date